



Product Catalog | ver.5.0



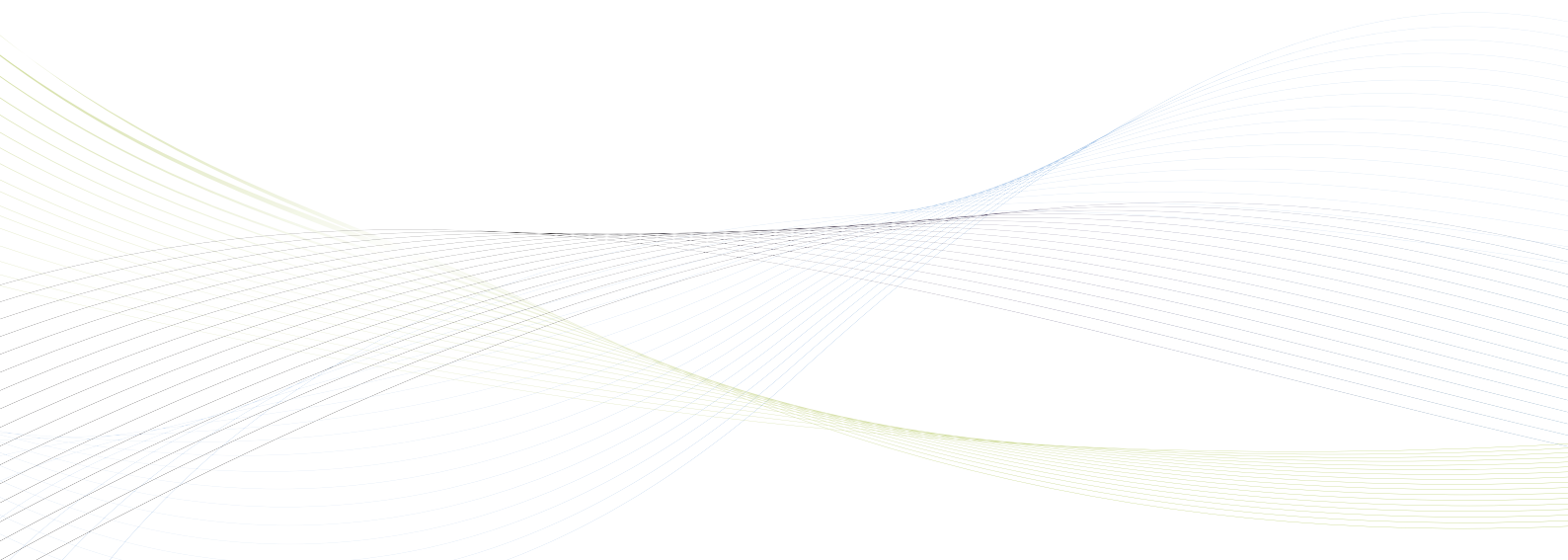
"The healthy coexistence of people and animals through the control of disease"

All living things are exposed to diseases during their life, and mankind has developed diagnostic tests and medicines for treatment of many of these diseases. There still remain diseases that we have not managed to overcome, and new diseases continue to emerge.

Diagnostics is the first step needed to manage these diseases. Early and accurate detection is very important for administering suitable treatment, as well as the prevention and control of the diseases spreading through a population.

BioNote products play a central role in the business of disease diagnostics. With its expertise in detection techniques, continual research and development and proven ability to produce new and innovative diagnostic products, BioNote will continue to grow.

The BioNote dream is to assist in achieving a healthy life for people, animals and all living things, by trying to create a society which has "The healthy coexistence of people and animals through the control of disease".



BioNote has distribution channels in over 80 countries globally



INTRODUCTION

BioNote, Inc. was established in the beginning of 2003, and is considered a pioneer of in-vitro Diagnostics for veterinary needs. BioNote delivers innovative and creative solutions for our customers improving their vet healthcare. BioNote has it's own automated facility to manufacture a wide range of high quality products developed by a highly competent R&D center. BioNote has manufactured diagnostic products in accordance with ISO 9001:ISO13485 certification, and has expanded overseas sales network in over 80 countries and is still continuing to grow.

HISTORY

2003
~2008

- 2003. 03 Anigen, Inc. established
- 2003. 11 Acquired animal medicine import license
- 2003. 12 Acquired animal medicine manufacturing industry permission
- 2004. 09 Acquired ISO 9001:2000 TUV certification

- 2005. 08 Moved to the new Young-tong factory
- 2006. 01 Purchased the site for the new Dongtan factory
- 2006. 04 Canine Distemper virus antibody diagnostic kit patent acquisition
- 2006. 04 Canine Parvovirus antibody diagnostic kit patent acquisition
- 2006. 06 Venture business certification (No.061627021-01133)
- 2006. 07 Technical innovation medium and small enterprises certification (No.6065-1216)

- 2007. 07 Gyeonggi-do excellent medium and small enterprises selection
- 2007. 09 H5 and general pathogenic avian influenza virus antigen diagnostic
- 2007. 11 Name change of Anigen, Inc. to Animal Genetics, Inc.
- 2007. 12 Winner of the Animal medicine manufacturer self-regulation checking system Prize
- 2008. 02 World's first influenza H3N2 type confirmation assay development
- 2008. 07 Novel canine influenza viruses and vaccine patent acquisition
- 2008. 12 Winner of the Animal medicine manufacturer self-regulation checking system Prize

2009
~2015

- 2009. 01 Anigen AIV Ab ELISA knowledge economics department new product certification (NEP) acquisition
- 2009. 02 Name change of Animal genetics, Inc. to BioNote, Inc.
- 2009. 03 Moved to new Dongtan factory
- 2009. 05 Food & Drug Administration medicine manufacturing industry permission acquisition
- 2009. 12 ISO 2003:13485 TUV certification acquisition Anigen Rapid Canine Heartworm Ag Test Kit USDA licensed

- 2011. 01 Acquisition by Alere
- 2012. 02 Built the 2nd building for Manufacturing, Warehouse, R&D lab.
- 2012. 04 Registered International Patent (PCT) for "A Novel Canine influenza virus and Vaccine"
- 2013. 02 AniGen TB-feron ELISA kit was assigned as an official diagnosis method for bovine tuberculosis eradication program in Korea
- 2014. 11 Spun off as an independent company from Alere, Inc. (USA)
- 2014. 12 Expanded Manufacturing facility
- 2015. 11 Expanded office and laboratory by moving to a new building

2016
~2019

- 2016. 09 Launched V-check, a fluorescence device for animals

- 2018. 04 Research facility BL3 (Biosafety Laboratory) Room certified for the first time by the government

CONTENTS

Health check	CPV Ab 2.0, CDV Ab 2.0	_06
Intestinal Disease	CPV Ag	_08
	CCV Ag	_09
	CPV/CCV Ag	_10
	Giardia Ag	_11
	CPV/CCV/Giardia Ag	_12
Respiratory Disease	CDV Ag	_13
	CIV Ag	_14
	CDV/CAV Ag	_15
	CIRD-3 Ag	_16
Vector borne / Other	CHW Ag	_17
	Leishmania Ab	_18
	E.canis Ab	_19
	Rabies Ag	_20
	C.Brucella Ab	_21
	Total Ig E	_22
	Anaplasma Ab	_23
	Lyme Ab	_24
	Canine Babesia Ab	_25
	CaniV-4	_26
	CaniV-4 (Leish)	_27
E.canis/Anaplasma Ab	_28	
Feline Disease	FHW Ag/Ab	_29
	FIV Ab/FelV Ag	_30
	FPV Ag	_31
	FCoV Ag	_32
	FCoV Ab	_33
	FCoV Ag/Ab	_34
	FeliD-3	_35
FeliCheck-3	_36	
	Vcheck V200	_37

CPV Ab 2.0, CDV Ab 2.0

General Information

Purpose : Titration of Canine Parvovirus or Distemper virus antibody (IgG)

Principle : Immunochromatographic assay

Specimen : Whole blood, plasma or serum

Materials provided :

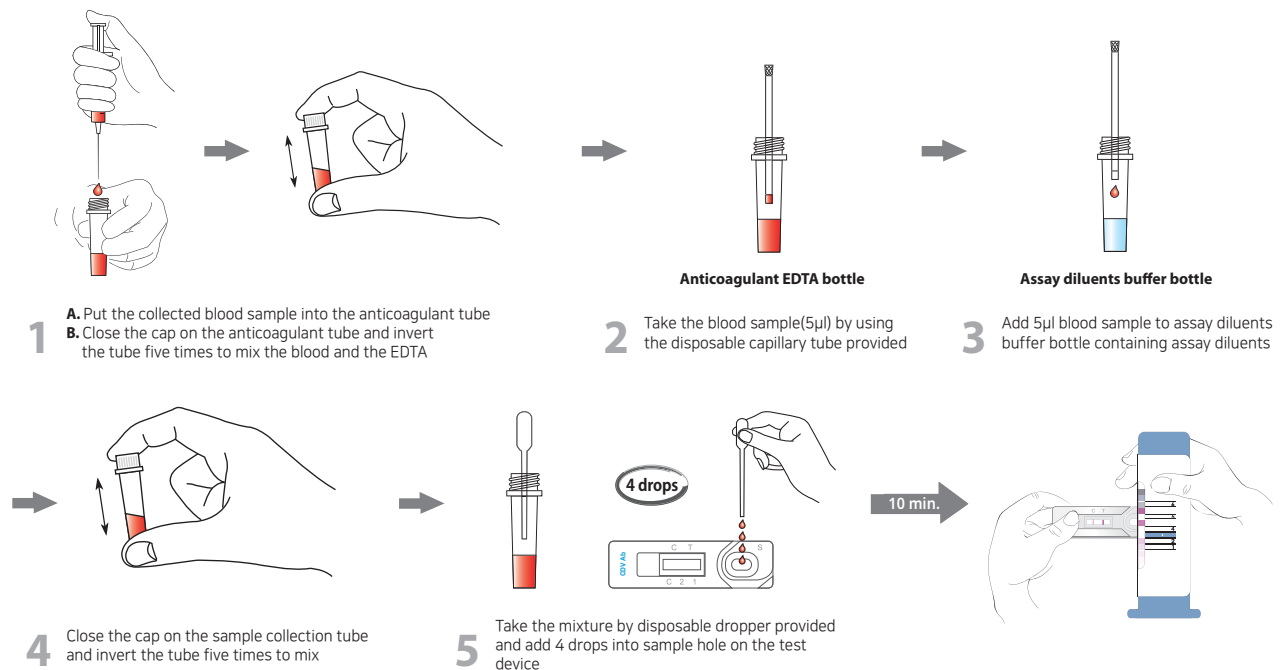
- Anigen Rapid CPV Ab/CDV Ab test device
- Assay diluents buffer bottle
- Anticoagulant EDTA bottle
- Disposable capillary tube
- Disposable dropper
- Color scale (1~6) measurement



Special Features :

- World's first CPV Ab and CDV Ab titer rapid immunochromatographic test kit
- Semi - quantitative detection of IgG antibodies
- One step testing procedure : Easy to use, Saving time and labor
- Quick & Accurate
- High sensitivity and specificity
 - Sensitivity : CPV 95.4 % vs. HI, CDV 96.6 % vs. VN
 - Specificity : CPV 97 % vs. HI, CDV 100 % vs. VN

Test Procedure

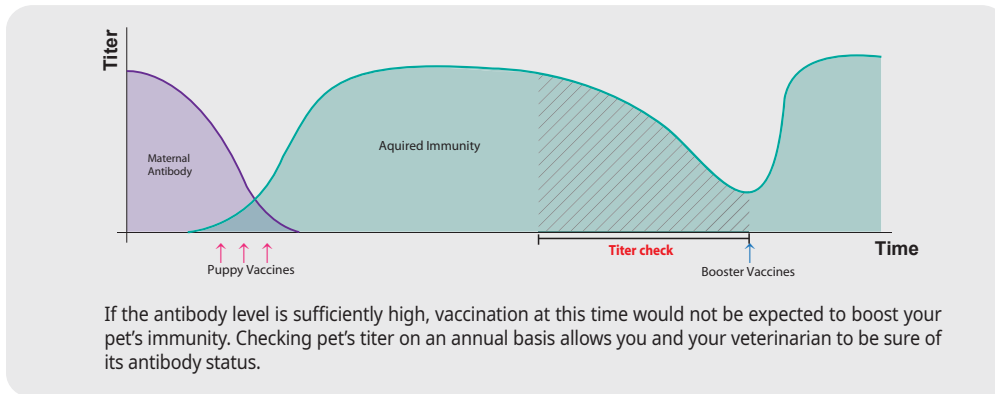


Ordering Information

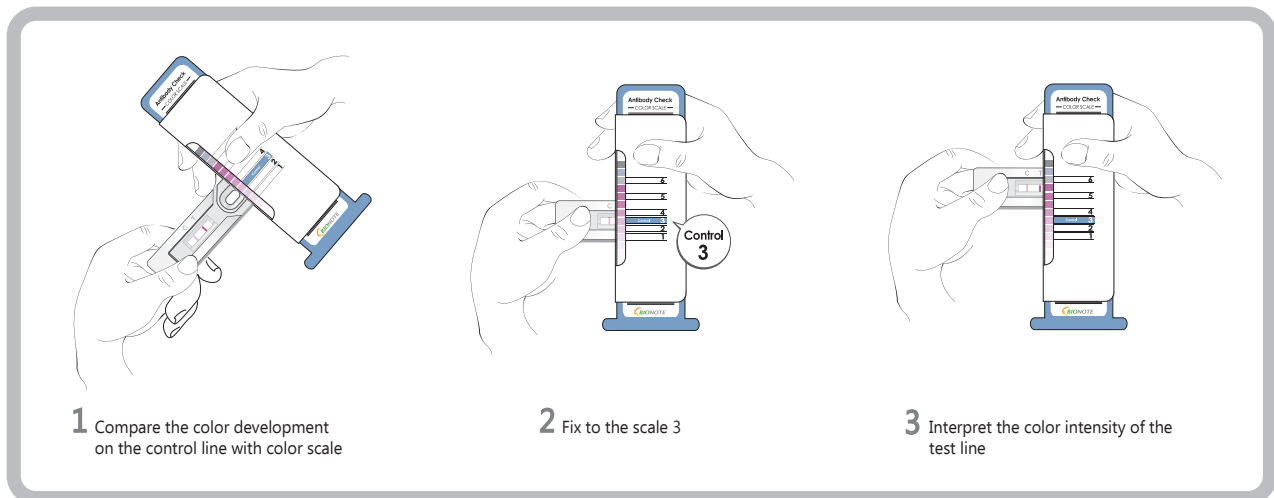
Cat. No.	Description	Type	pack size
RB2151DD	CPV Ab 2.0	Device	10 Tests/Kit
RB2152DD	CDV Ab 2.0	Device	10 Tests/Kit

Application

- For serological diagnosis of CPV and CDV infection
- For the prediction of prognosis in patients with CPV or CDV
- For assessment of immune status of puppies after vaccination
- For determination of the proper time of vaccination by measuring a maternal antibody titer
- For determination of the proper time for revaccination



Reading the result of titer check system



Line color Intensity	Titer	Color scale level and immune status
	CPV - HI Below 80 CDV - SN Below 16	The color development of T line is weaker than that of C line (Color scale 1~2) **Antibody titer is low against CDV or CPV This is indicative of poor immune status (additional vaccination required)
	CPV - HI 80 CDV - SN 16	The T line has equal color development with C lines (Color scale 3) **Antibody titer is medium against CDV or CPV This is indicative of a good immune status
	CPV - HI Over 80 CDV - SN Over 16	The color development of T line is higher or same with C line (Color scale 4~6) **Antibody titer is high against CDV or CPV This is indicative of a excellent immune status

CPV Ag

General Information

Purpose : Detection of Canine Parvovirus antigen

Principle : Immunochromatographic assay

Specimen : Canine feces

Materials provided :

- Anigen Rapid CPV test device
- Assay diluents tube
- Disposable swab
- Disposable dropper

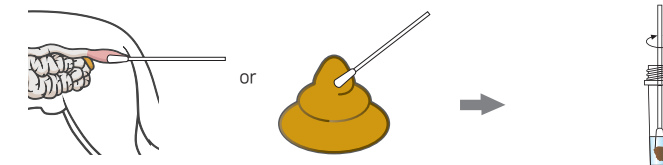
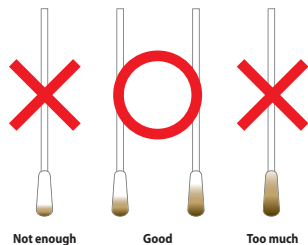
Special Features :

- Detection of pathogenic CPV subtypes (CPV 2, 2a, 2b & 2c)
- One-step testing procedure : Quick & Accurate
- High sensitivity and specificity
 - Sensitivity : 100%
 - Specificity : 98.8%

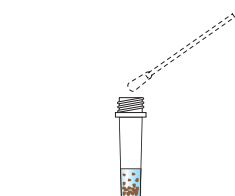


Test Procedure

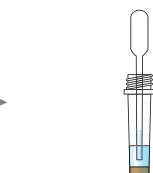
[Proper sample amount collected by a swab]



- 1 Collect a sample from the canine feces by using the swab
- 2 Insert the swab into the sample collection tube and stir the swab at least 10 times



- 3 Discard the swab while squeezing the swab against the wall of the tube



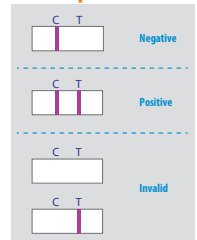
- 4 Wait until large particles to sink and take the supernatant by using the disposable dropper provided



- 5 Add 4 drops into the sample hole on the test device

5-10 min.

Interpretation



Ordering Information

Cat. No.	Description	Type	Pack size
RG1101DD	CPV Ag	Device	10 Tests/Kit

Anigen Rapid CCV Ag

General Information

Purpose : Detection of Canine Coronavirus antigen

Principle : Immunochromatographic assay

Specimen : Canine feces

Materials provided :

- Anigen Rapid CCV test device
- Assay diluents tube
- Disposable swab
- Disposable dropper

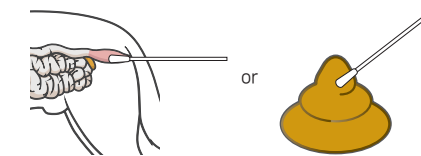
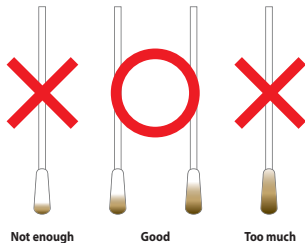
Special Features :

- World's first CCV Ag rapid test
- One-step testing procedure : Quick & Accurate
- High sensitivity and specificity
 - Sensitivity : 93.1% vs. PCR
 - Specificity : 97.5% vs. PCR



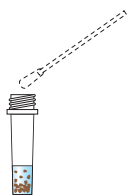
Test Procedure

[Proper sample amount collected by a swab]

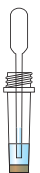


1 Collect a sample from the canine feces by using the swab

2 Insert the swab into the sample collection tube and stir the swab at least 10 times



3 Discard the swab while squeezing the swab against the wall of the tube



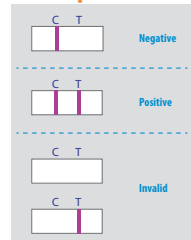
4 Wait until large particles to sink and take the supernatant by using the disposable dropper provided



5 Add 4 drops into the sample hole on the test device

5-10 min.

Interpretation



Ordering Information

Cat. No.	Description	Type	Pack size
RG1104DD	CCV Ag	Device	10 Tests/Kit

CPV/CCV Ag

General Information

Purpose : Detection of Canine Parvovirus and Coronavirus antigen

Principle : Immunochromatographic assay

Specimen : Canine feces

Materials provided :

- Anigen Rapid CPV/CCV test device
- Assay diluents tube
- Disposable swab
- Disposable dropper

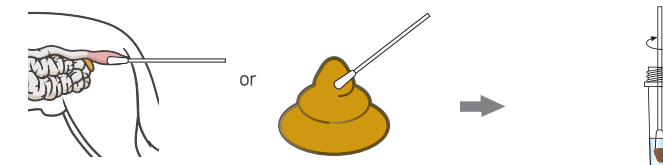
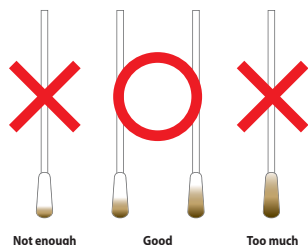
Special Features :

- Simultaneous detection of CPV and CCV with one specimen preparation
- One-step testing procedure : Quick & Accurate
- High sensitivity and specificity

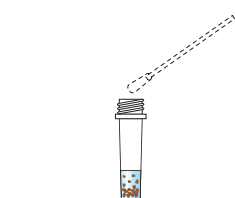


Test Procedure

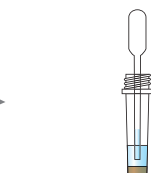
[Proper sample amount collected by a swab]



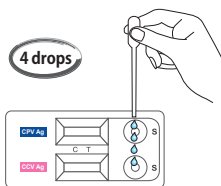
- 1 Collect a sample from the canine feces by using the swab
- 2 Insert the swab into the sample collection tube and stir the swab at least 10 times



- 3 Discard the swab while squeezing the swab against the wall of the tube

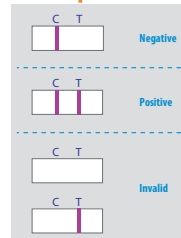


- 4 Wait until large particles to sink and take the supernatant by using the disposable dropper provided



- 5 Add 4 drops into the sample hole on the test device

Interpretation



Ordering Information

Cat. No.	Description	Type	Pack size
RC1105DD	CPV/CCV Ag	Dual Device	10 Tests/Kit

Anigen Rapid

Giardia Ag

General Information

Purpose : Detection of vegetative stages and cysts of Giardia

Principle : Immunochromatographic assay

Specimen : Canine feces

Materials provided :

- Anigen Rapid Giardia test device
- Assay diluents tube
- Disposable swab
- Disposable dropper

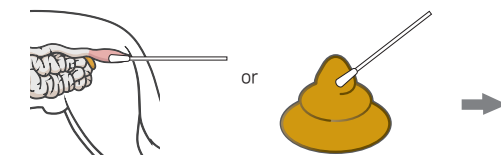
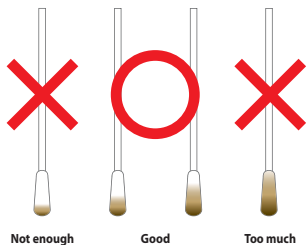
Special Features :

- Able to detect the pathogen in both dogs and cats
- One-step testing procedure : Quick & Accurate
- High sensitivity and specificity
- Detection limit: 125/100 μ l

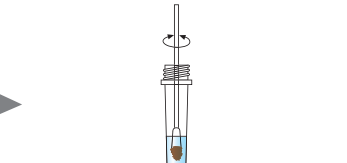


Test Procedure

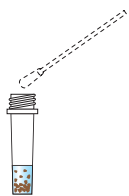
[Proper sample amount collected by a swab]



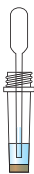
1 Collect a sample from the canine feces by using the swab



2 Insert the swab into the sample collection tube and stir the swab at least 10 times



3 Discard the swab while squeezing the swab against the wall of the tube

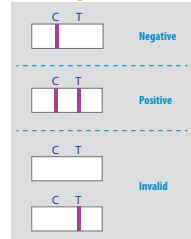


4 Wait until large particles sink and take the supernatant by using the disposable dropper provided



5 Add 4 drops into the sample hole on the test device

Interpretation



Ordering Information

Cat. No.	Description	Type	Pack size
RG1804DD	Giardia Ag	Device	10 Tests/Kit

CPV/CCV/Giardia Ag

General Information

Purpose : Detection of Canine Parvovirus, Coronavirus and Giardia antigen

Principle : Immunochromatographic assay

Specimen : Canine feces

Materials provided :

- Anigen Rapid CPV/CCV/Giardia test device
- Assay diluents tube for CPV/CCV Ag (P)
- Assay diluents tube for Giardia Ag (G)
- Disposable swab
- Disposable dropper

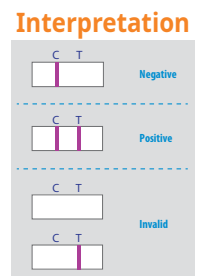
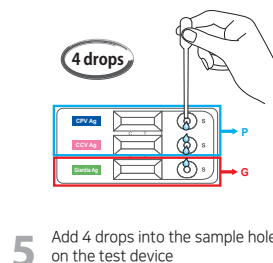
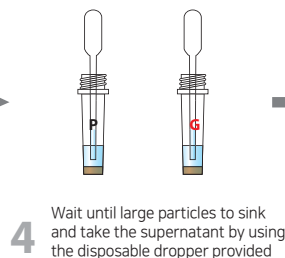
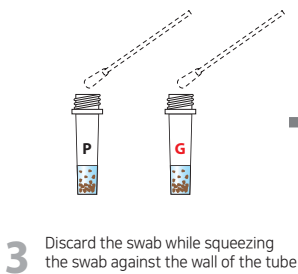
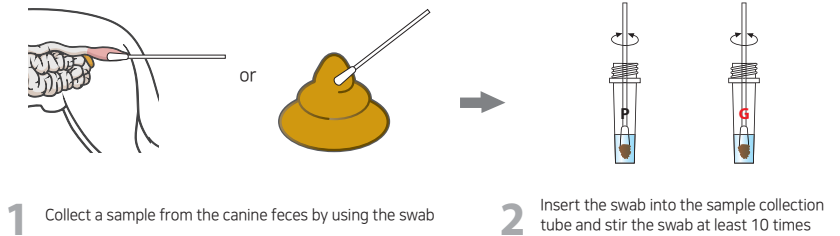
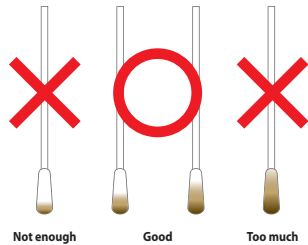
Special Features :

- Simultaneous detection of CPV, CCV and Giardia
- One-step testing procedure : Quick & Accurate
- High sensitivity and specificity



Test Procedure

[Proper sample amount collected by a swab]



Ordering Information

Cat. No.	Description	Type	Pack size
RC1112DC	CPV/CCV/Giardia Ag	Quattro Device	5 Tests/Kit

Anigen Rapid CDV Ag

General Information

Purpose : Detection of Canine Distemper virus antigen

Principle : Immunochromatographic assay

Specimen : Conjunctiva (Recommended), urine, serum or plasma

Materials provided :

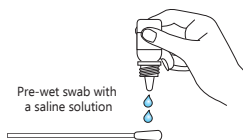
- Anigen Rapid CDV test device
- Assay diluents tube
- Disposable swab
- Disposable dropper

Special Features :

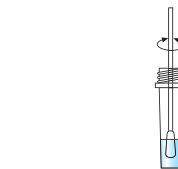
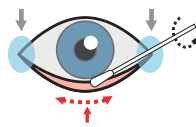
- One-step testing procedure : Quick & Accurate
- High sensitivity and specificity
 - Sensitivity : 98.8 % vs. Nested PCR
 - Specificity : 97.7 % vs. Nested PCR



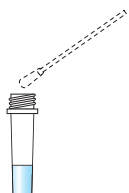
Test Procedure



1 Collect conjunctiva sample from the 3rd eye lid (Red colored area)



2 Insert the swab into the sample collection tube and stir the swab at least 10 times



3 Discard the swab while squeezing the swab against the wall of the tube



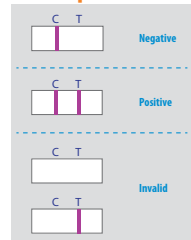
4 Take the supernatant by using the disposable dropper provided



5 Add 4 drops into the sample hole on the test device



Interpretation



Ordering Information

Cat.No.	Description	Type	Pack size
RG1103DD	CDV Ag	Device	10 Tests/Kit

CIV Ag

General Information

Purpose : Detection of Canine Influenza virus antigen

Principle : Immunochromatographic assay

Specimen : Nasal fluid

Materials provided :

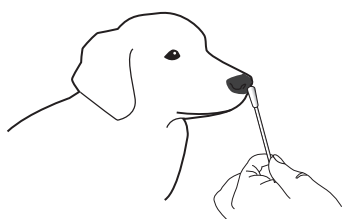
- Anigen Rapid CIV test device
- Assay diluents tube
- Disposable swab
- Disposable dropper

Special Features :

- Detection of Canine influenza virus H3 strain antigen
- One-step testing procedure : Quick & Accurate
- High sensitivity and specificity
 - Sensitivity : 90 % vs. Real Time -PCR
 - Specificity : 95.8 % vs. Real Time -PCR



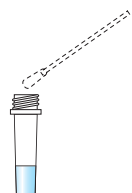
Test Procedure



1 Swab the nasal cavity epithelial cell



2 Insert the swab into the sample collection tube and stir the swab at least 10 times



3 Discard the swab while squeezing the swab against the wall of the tube



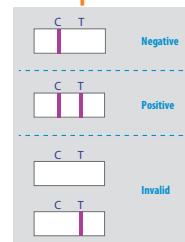
4 Take the supernatant by using the disposable dropper provided



5 Add 4 drops into the sample hole on the test device



Interpretation



Ordering Information

Cat. No.	Description	Type	Pack size
RG1107DD	CIV Ag	Device	10 Tests/Kit

Anigen Rapid

CDV/CAV Ag

General Information

Purpose : Detection of Canine Distemper virus and Adenovirus antigen

Principle : Immunochromatographic assay

Specimen : CDV Ag - Conjunctiva, CAV Ag - Nasal fluid

Materials provided :

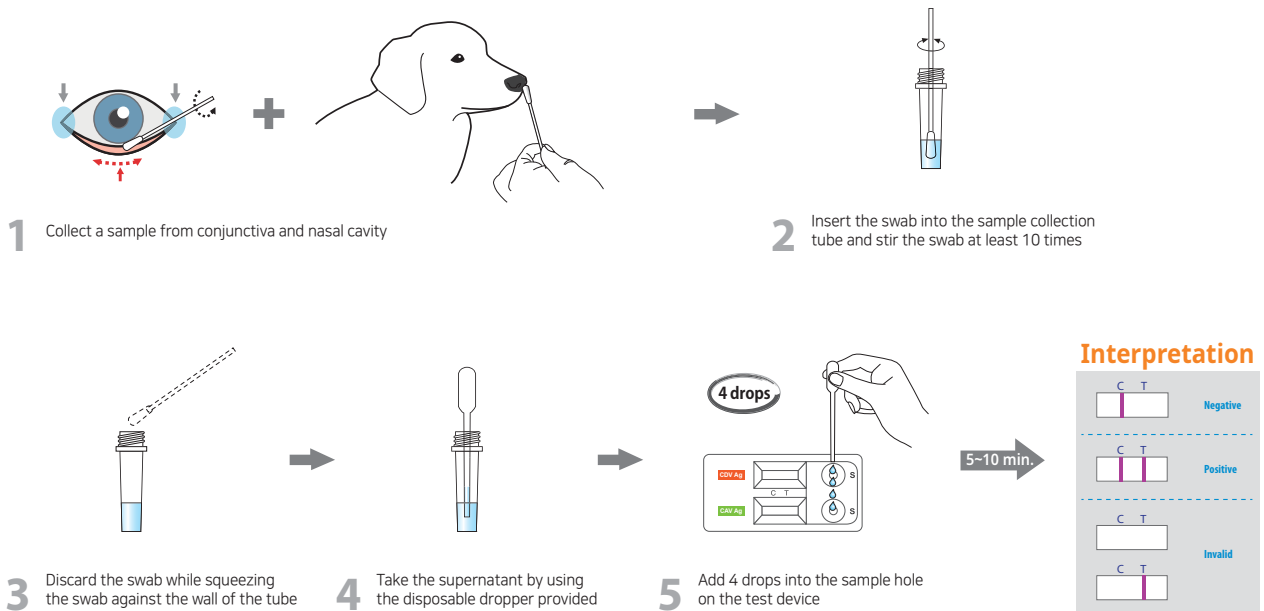
- Anigen Rapid CDV/CAV test device
- Assay diluents tube
- Disposable swab
- Disposable dropper

Special Features :

- Simultaneous detection of CDV and CAV with one specimen preparation
- One-step testing procedure : Quick & Accurate
- High sensitivity and specificity



Test Procedure



Ordering Information

Cat. No.	Description	Type	Pack size
RC1108DD	CDV/CAV Ag	Dual Device	10 Tests/Kit

CIRD-3 Ag

General Information

Purpose : Detection of Canine Infectious Respiratory Disease (CDV, CAV and CIV)

Principle : Immunochromatographic assay

Specimen : CDV Ag - Conjunctiva, CAV & CIV Ag - Nasal fluid

Materials provided :

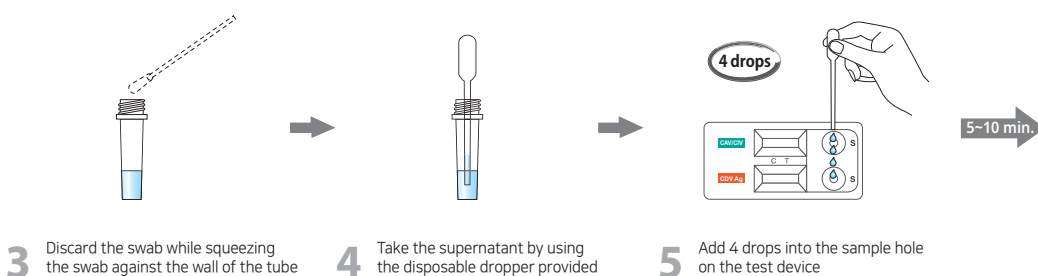
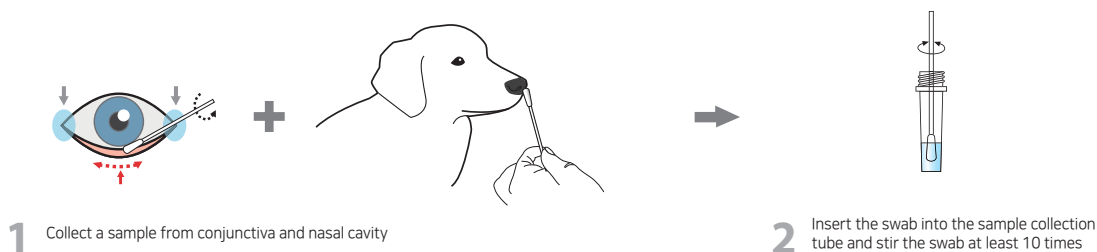
- Anigen Rapid CIRD-3 test device
- Assay diluents tube
- Disposable swab
- Disposable dropper

Special Features :

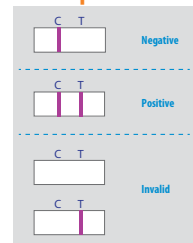
- Simultaneous detection of CDV, CAV and CIV with one specimen preparation
- One-step testing procedure : Quick & Accurate
- High sensitivity and specificity



Test Procedure



Interpretation



Ordering Information

Cat. No.	Description	Type	Pack size
RC1109DD	CIRD-3 Ag	Dual Device	10 Tests/Kit

Anigen Rapid

CHW Ag 2.0

General Information

Purpose : Detection of Canine *Dirofilaria immitis* antigen

Principle : Immunochromatographic assay

Specimen : Whole blood, plasma or serum

Materials provided :

- Anigen Rapid CHW test device
- Anticoagulant tube
- Disposable dropper

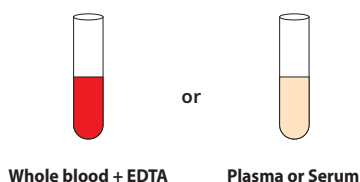
Special Features :

- Unique antibody system in the Anigen Canine Heartworm Ag test kit
- Diagnosis of infections with up to a burden of 2 heartworms of any type including Male, Adult female, Immature female & Non-propagated female worms
- One-step testing procedure : Quick & Accurate
- High sensitivity and specificity
 - Sensitivity : 99.5 %
 - Specificity : 94.0 %

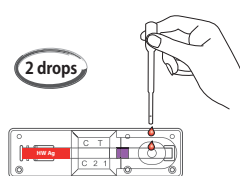


The earliest phase of heartworm antigen and microfilariae that can be detected is about 5 and 6 months post infection, respectively. Whether screening a population of asymptomatic dogs or seeking verification of a suspected heartworm infection, antigen testing is the most sensitive diagnostic method. Microfilaria testing is complementary and may be done in tandem with antigen testing to determine whether this life cycle stage is also present in dogs that are antigenemic.

Test Procedure



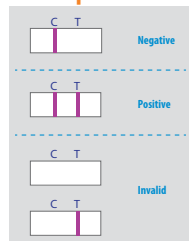
1 Prepare a sample



2 Add 2 drops of the blood, plasma or serum into the sample hole on the test device

5-10 min.

Interpretation



Ordering Information

Cat. No.	Description	Type	Pack size
RG1102DD	CHW Ag 2.0	Device	10 Tests/Kit

Leishmania Ab

General Information

Purpose : Detection of *Leishmania infantum* antibody

Principle : Immunochromatographic assay

Specimen : Whole blood, plasma or serum

Materials provided :

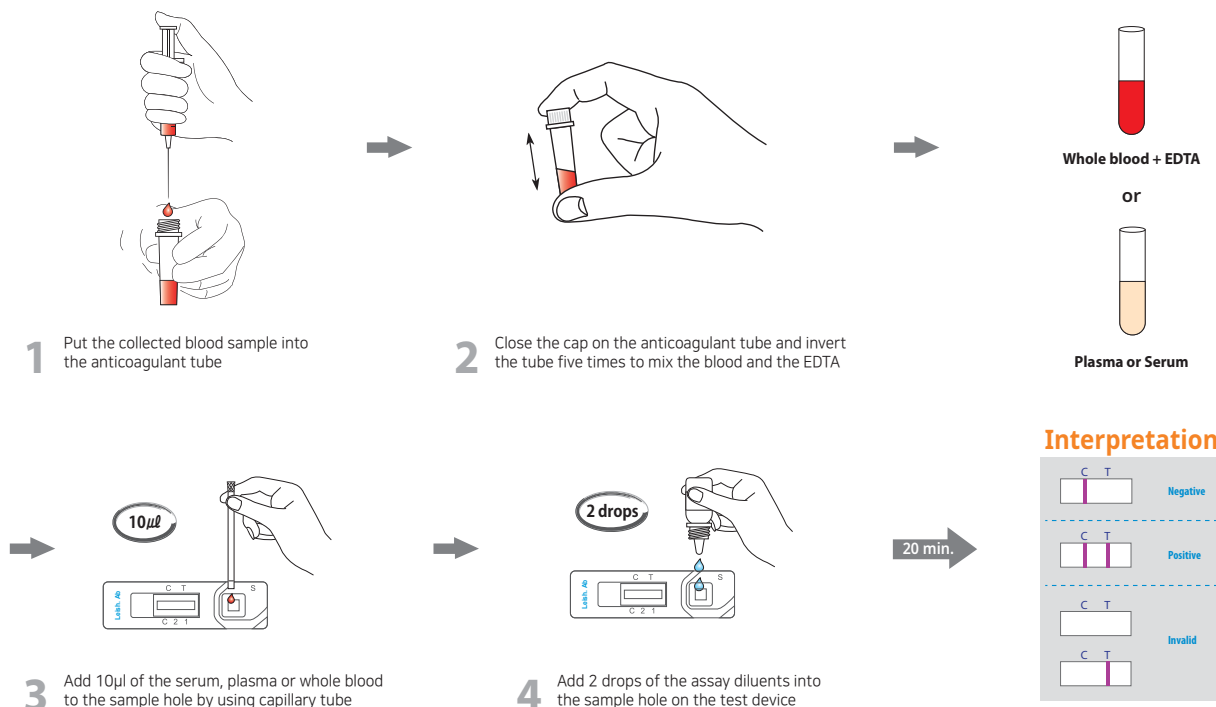
- Anigen Rapid Leishmania test device
- Assay diluents bottle
- Anticoagulant tube
- Disposable capillary tube

Special Features :

- One-step testing procedure : Quick & Accurate
- High sensitivity and specificity
 - Sensitivity : 97.2 % vs. IFA
 - Specificity : 99.8 % vs. IFA



Test Procedure



Ordering Information

Cat. No.	Description	Type	Pack size
RB2104DD	Leishmania Ab	Device	10 Tests/Kit

E.canis Ab

General Information

Purpose : Detection of *Ehrlichia canis* antibody

Principle : Immunochromatographic assay

Specimen : Whole blood, plasma or serum

Materials provided :

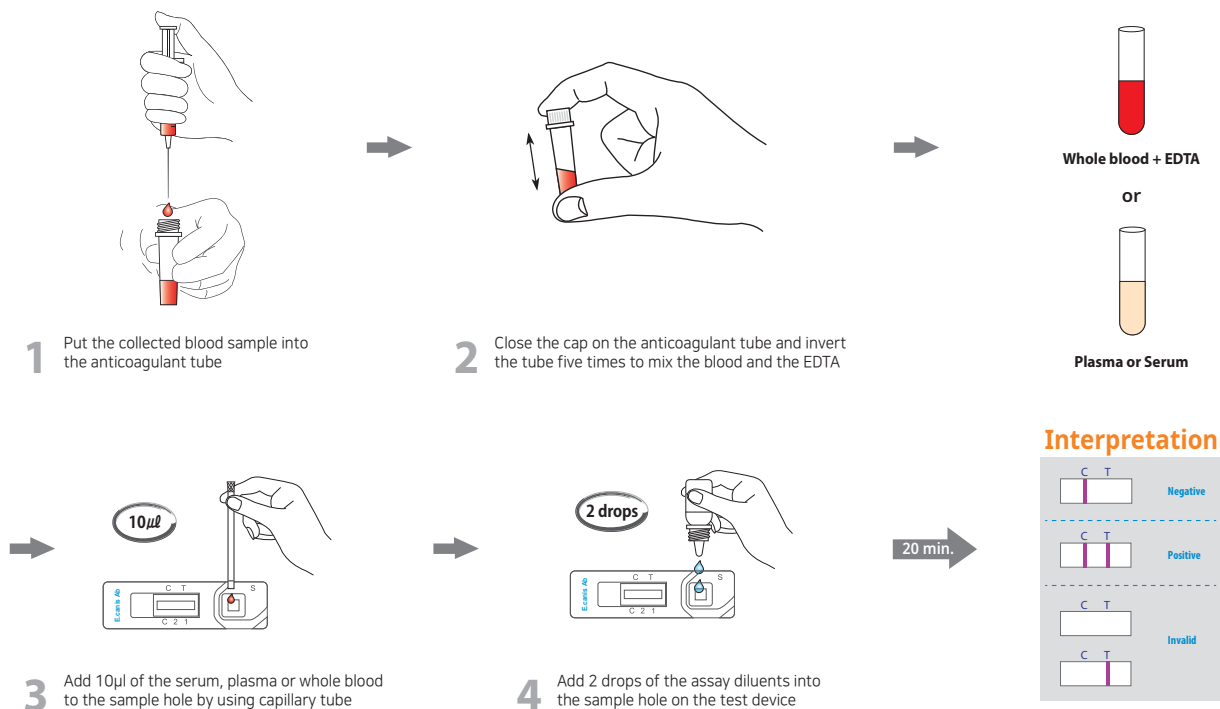
- Anigen Rapid E.canis test device
- Assay diluents bottle
- Anticoagulant tube
- Disposable capillary tube

Special Features :

- One-step testing procedure : Quick & Accurate
- High sensitivity and specificity
 - Sensitivity : 98.2 % vs. IFA
 - Specificity : 100 % vs. IFA



Test Procedure



Ordering Information

Cat. No.	Description	Type	Pack size
RB2105DD	E.canis Ab	Device	10 Tests/Kit

Rabies Ag

General Information

Purpose : Detection of Rabies virus antigen

Principle : Immunochromatographic assay

Specimen : 10 % brain homogenates

Materials provided :

- Anigen Rapid Rabies test device
- Assay diluents tube
- Disposable swab
- Disposable dropper

Special Features :

- One-step testing procedure : Quick & Accurate
- High sensitivity and specificity
 - Sensitivity : 94.1 % vs. RT-PCR
 - Specificity : 100 % vs. RT-PCR



Test Procedure

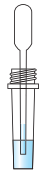


1 Prepare 10 % brain homogenates with PBS

2 Collect a sample from brain homogenates by using the swab



3 Insert the swab into the sample collection tube and swirl the swab at least 10 times



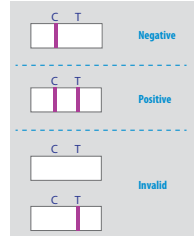
4 Take the supernatant by using the disposable dropper provided



5 Add 4 drops into the sample hole on the test device

5-10 min.

Interpretation



Ordering Information

Cat. No.	Description	Type	Pack size
RG1801DD	Rabies Ag	Device	10 Tests/Kit

C.Brucella Ab

General Information

Purpose : Detection of Canine Brucella antibody

Principle : Immunochromatographic assay

Specimen : Whole blood, plasma or serum

Materials provided :

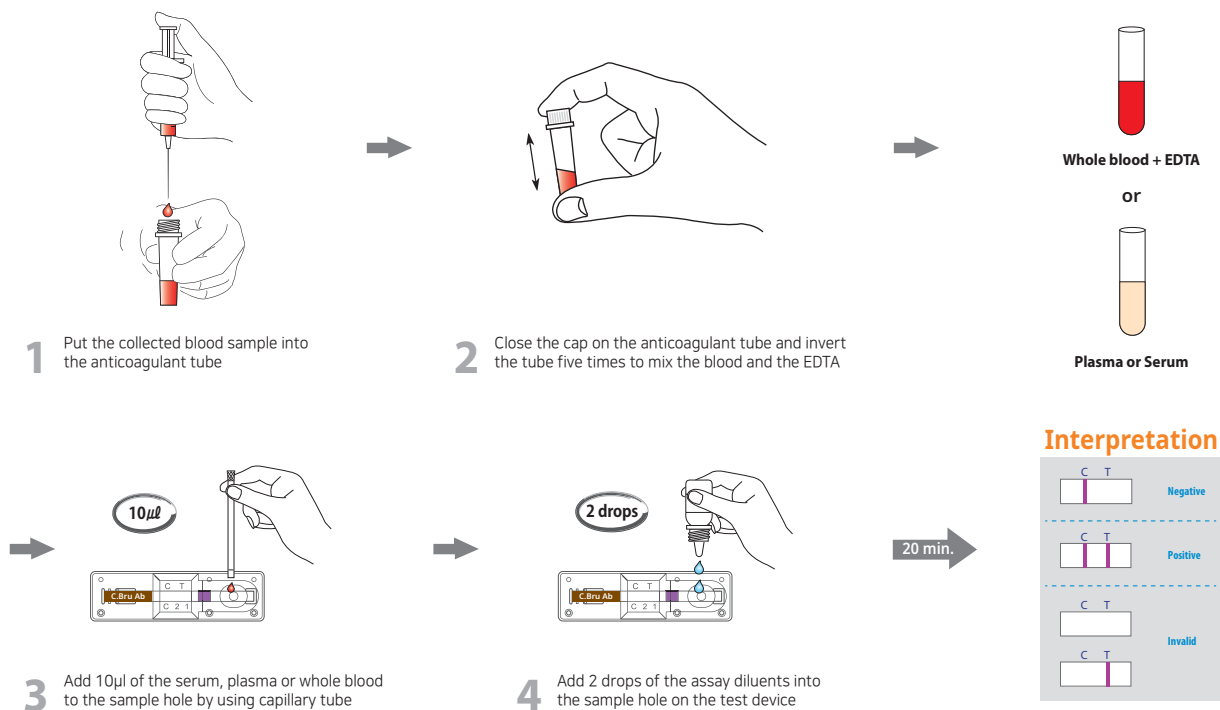
- Anigen Rapid C.Brucella test device
- Assay diluents bottle
- Anticoagulant tube
- Disposable capillary tube

Special Features :

- One-step testing procedure : Quick & Accurate
- High sensitivity and specificity
 - Sensitivity : 90 % vs. Virus Isolation method
 - Specificity : 90.1 % vs. Virus Isolation method



Test Procedure



Ordering Information

Cat. No.	Description	Type	Pack size
RB2103DD	C.Brucella Ab	Device	10 Tests/Kit

Total IgE (Allergy indicator test)

General Information

Purpose : Detection of Canine Total IgE

Principle : Immunochromatographic assay

Specimen : serum

Materials provided :

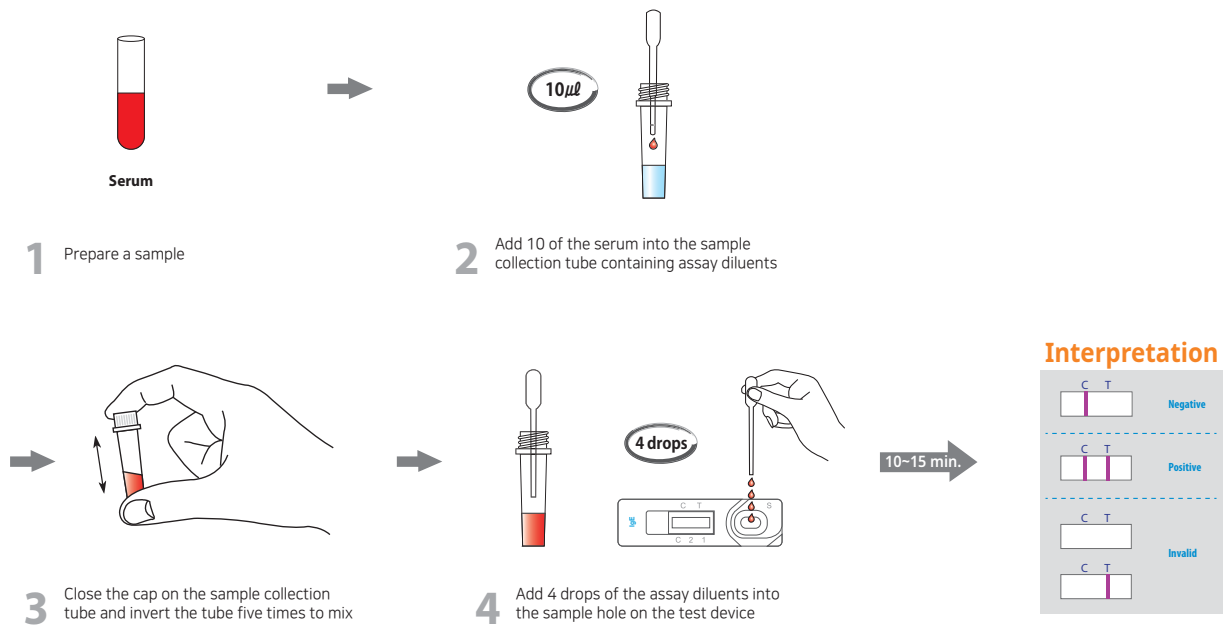
- Anigen Rapid Total IgE test device
- Assay diluents bottle
- Disposable capillary tube
- Disposable dropper

Special Features :

- Canine allergy indicator test
- One-step testing procedure : Quick & Accurate
- High sensitivity and specificity
 - Sensitivity : 97.1% vs. Dog IgE ELISA Quantitation set(BETHYL Lab., Inc.)
 - Specificity : 96.4% vs. Dog IgE ELISA Quantitation set(BETHYL Lab., Inc.)
- Detects serum total IgE higher than 10³U/L



Test Procedure



Ordering Information

Cat. No.	Description	Type	Pack size
RB2110DD	Total Ig E	Device	10 Tests/Kit

Anaplasma Ab

General Information

Purpose : Detection of *Anaplasma phagocytophilum*/*Anaplasma platys* antibody

Principle : Immunochromatographic assay

Specimen : Whole blood, plasma or serum

Materials provided :

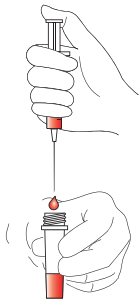
- Anigen Rapid Anaplasma test device
- Assay diluents bottle
- Anticoagulant tube
- Disposable capillary tube

Special Features :

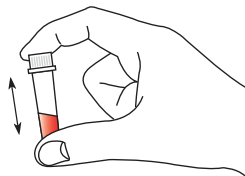
- One-step testing procedure : Quick & Accurate
- High sensitivity and specificity
 - Sensitivity : 96.1% vs. IFA
 - Specificity : 99.3% vs. IFA



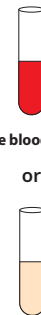
Test Procedure



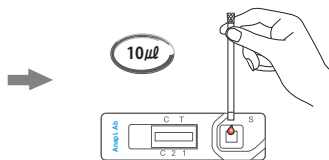
1 Put the collected blood sample into the anticoagulant tube



2 Close the cap on the anticoagulant tube and invert the tube five times to mix the blood and the EDTA



Whole blood + EDTA
or
Plasma or Serum



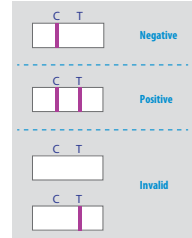
3 Add 10µl of the serum, plasma or whole blood to the sample hole by using capillary tube



4 Add 3 drops of the assay diluents into the sample hole on the test device



Interpretation



Ordering Information

Cat. No.	Description	Type	Pack size
RB2121DD	Anaplasma Ab	Device	10 Tests/Kit

Lyme Ab

General Information

Purpose : Detection of *Borrelia burgdorferi* antibody

Principle : Immunochromatographic assay

Specimen : Whole blood, plasma or serum

Materials provided :

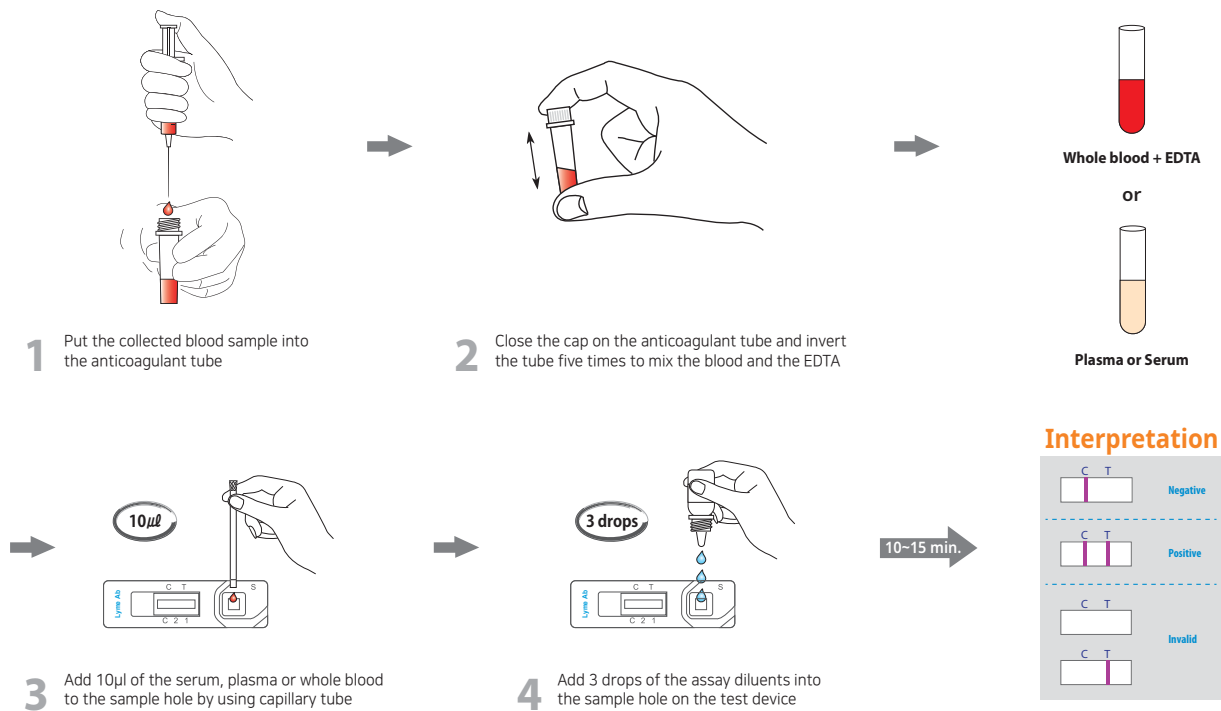
- Anigen Rapid Borrelia test device
- Assay diluents bottle
- Anticoagulant tube
- Disposable capillary tube

Special Features :

- One-step testing procedure : Quick & Accurate
- High sensitivity and specificity
 - Sensitivity : 93%
 - Specificity : 98%



Test Procedure



Ordering Information

Cat. No.	Description	Type	Pack size
RB2122DD	Lyme Ab	Device	10 Tests/Kit

Canine Babesia Ab

General Information

Purpose : Detection of Canine Babesia gibsoni antibody

Principle : Immunochromatographic assay

Specimen : Whole blood, plasma or serum

Materials provided :

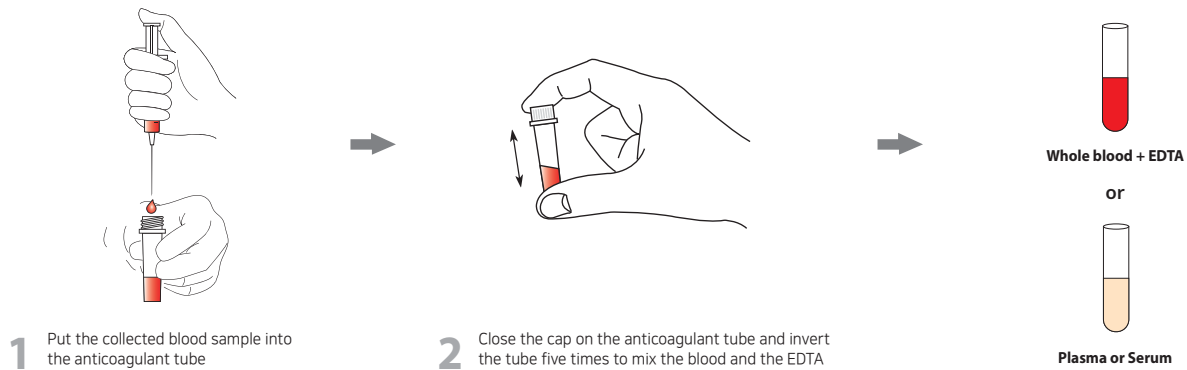
- Anigen Rapid Canine Babesia Ab test device
- Assay diluents bottle
- Anticoagulant tube
- Disposable capillary tube

Special Features :

- One-step testing procedure : Quick & Accurate
- High sensitivity and specificity
 - Sensitivity: 90.9%
 - Specificity: 98.9%



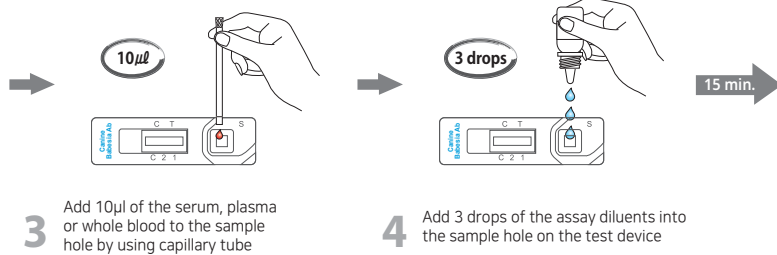
Test Procedure



1 Put the collected blood sample into the anticoagulant tube

2 Close the cap on the anticoagulant tube and invert the tube five times to mix the blood and the EDTA

Whole blood + EDTA
or
Plasma or Serum



3 Add 10µl of the serum, plasma or whole blood to the sample hole by using capillary tube

4 Add 3 drops of the assay diluents into the sample hole on the test device

Interpretation

Clinical Signs	PCR	Bionote Canine Babesia Ab	Interpretation	Diagnosis
+	+	+	4~16 weeks after infection	Infection
+	+	-	2~4 weeks after infection	Infection
+	-	+	At least 17 weeks after infection	Recheck necessary
+	-	-	Only 1~3 weeks passed after infection	Recheck necessary

Ordering Information

Cat. No.	Description	Type	Pack size
RB2126DD	Canine Babesia Ab	Device	10 Tests/Kit

CaniV-4

General Information

Purpose : Detection of *Dirofilaria immitis* antigen, *Ehrlichia canis* antibody, *Borrelia burgdoferi* antibody *Anaplasma phagocytophilum*/*Anaplasma platys* antibody

Principle : Immunochromatographic assay

Specimen : Whole blood, plasma or serum

Materials provided :

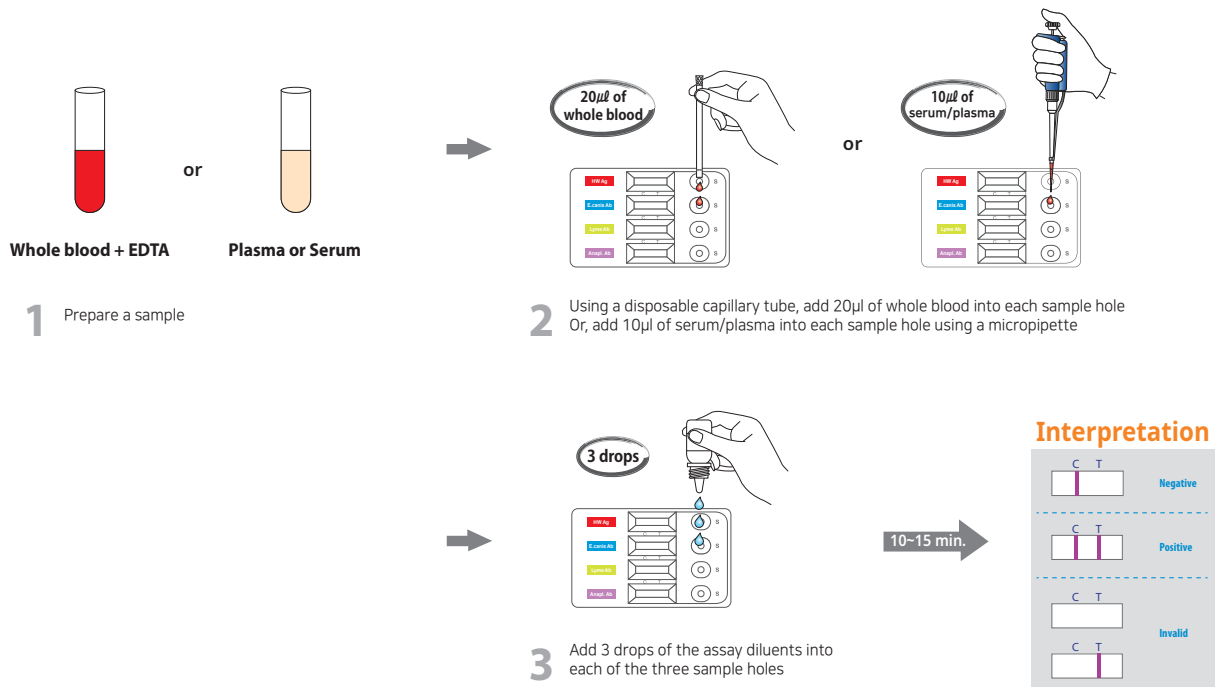
- Anigen Rapid CaniV-4 test device
- Assay diluents bottle
- Anticoagulant tube
- Disposable capillary tube

Special Features :

- Simultaneous detection of four kinds of Vector Borne diseases
- One-step testing procedure : Quick & Accurate
- High sensitivity and specificity



Test Procedure



Ordering Information

Cat. No.	Description	Type	Pack size
RC2120DD	CaniV-4	Quattro Device	10 Tests/Kit

Anigen Rapid

CaniV-4 (Leish)

General Information

Purpose : Detection of *Dirofilaria immitis* antigen, *Ehrlichia canis* antibody, *Leishmania infantum* antibody

Anaplasma phagocytophilum/Anaplasma platys antibody

Principle : Immunochromatographic assay

Specimen : Whole blood, plasma or serum

Materials provided :

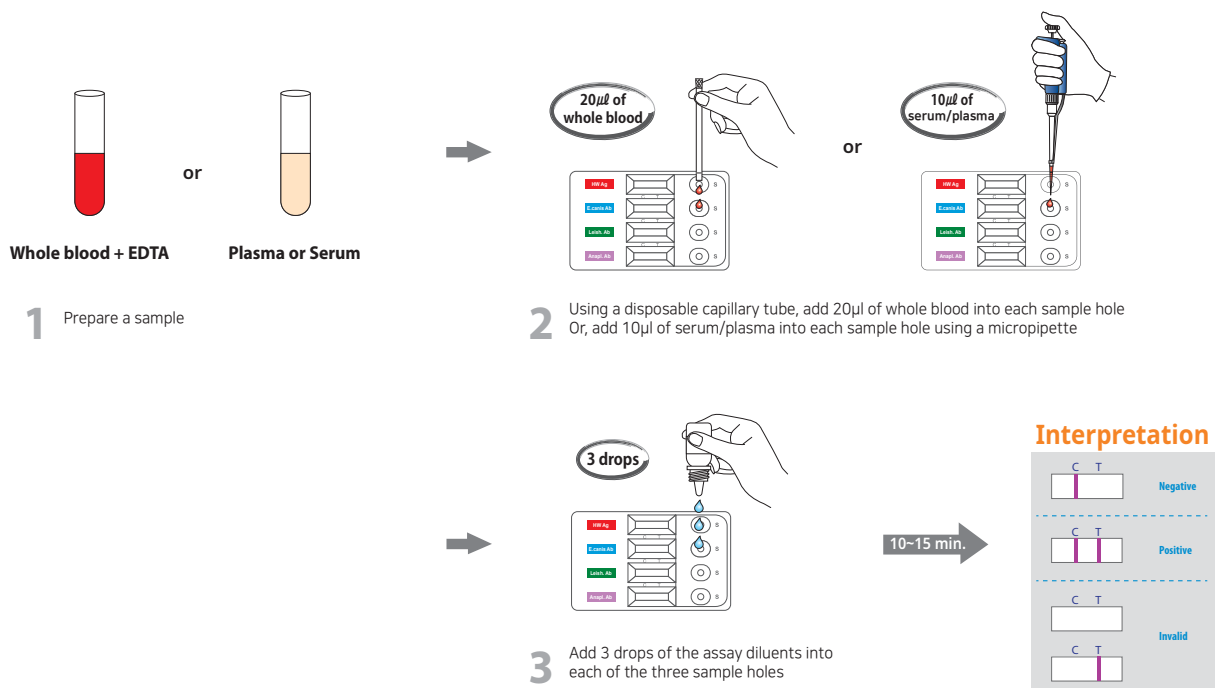
- Anigen Rapid CaniV-4(Leish) test device
- Assay diluents bottle
- Anticoagulant tube
- Disposable capillary tube

Special Features :

- Simultaneous detection of four kinds of Vector Borne diseases
- One-step testing procedure : Quick & Accurate
- High sensitivity and specificity



Test Procedure



Ordering Information

Cat. No.	Description	Type	Pack size
RC2127DD	CaniV-4 (Leish)	Quattro Device	10 Tests/Kit

E.canis/Anaplasma Ab

General Information

Purpose : Detection of *Ehrlichia canis* and *Anaplasma phagocytophilum*/*Anaplasma platys*

Principle : Immunochromatographic assay

Specimen : Whole blood, plasma or serum

Materials provided :

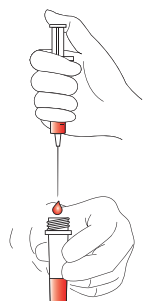
- Anigen Rapid E.canis/Anaplasma Ab test device
- Assay diluents bottle
- Anticoagulant tube
- Disposable capillary tube

Special Features :

- Simultaneous detection of E.canis Ab and Anaplasma Ab with one specimen preparation
- One-step testing procedure : Quick & Accurate
- High sensitivity and specificity



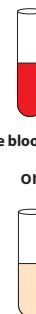
Test Procedure



1 Put the collected blood sample into the anticoagulant tube



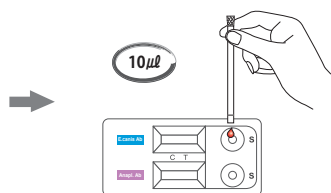
2 Close the cap on the anticoagulant tube and invert the tube five times to mix the blood and the EDTA



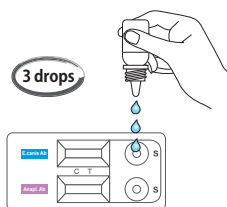
Whole blood + EDTA

or

Plasma or Serum



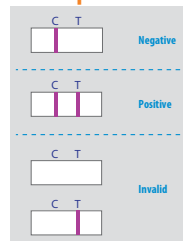
3 Add 10µl of the serum, plasma or whole blood to the sample hole by using capillary tube



4 Add 3 drops of the assay diluents into the sample hole on the test device



Interpretation



Ordering Information

Cat. No.	Description	Type	Pack size
RC2123CD	E.canis/Anaplasma Ab	Dual Device	10 Tests/Kit

Anigen Rapid

FHW Ag/Ab

General Information

Purpose : Detection of Feline heartworm antigen and antibody

Principle : Immunochromatographic assay

Specimen : Whole blood, plasma or serum

Materials provided :

- Anigen Rapid FHW Ag/Ab test device
- Assay diluents bottle
- Anticoagulant tube
- Disposable capillary tube

Special Features :

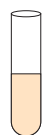
- Simultaneous detection of FHW Ag and Ab with one specimen preparation
- One-step testing procedure : Quick & Accurate
- High sensitivity and specificity



Test Procedure

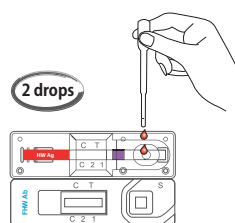


or



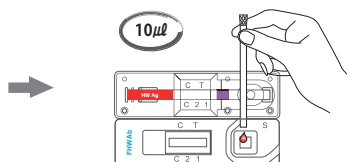
Whole blood + EDTA

Plasma or Serum

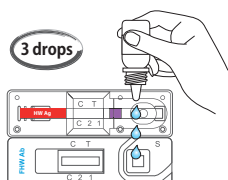


1 Prepare a sample

2 Use the disposable dropper and add 2 drops of the sample into the sample hole (FHW Ag)



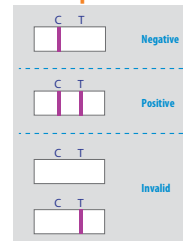
3 Add 10µl of the serum, plasma or whole blood to the sample hole by using capillary tube



4 Add 3 drops of the assay diluents into the sample hole



Interpretation



Ordering Information

Cat. No.	Description	Type	Pack size
RC2205CD	FHW Ag/Ab	Dual Device	10 Tests/Kit

FIV Ab/FeLV Ag

General Information

Purpose : Simultaneous detection of Feline Immunodeficiency virus antibody and Feline Leukemia Virus antigen

Principle : Immunochromatographic assay

Specimen : Whole blood, plasma or serum

Materials provided :

- Anigen Rapid FIV Ab / FeLV Ag test device
- Assay diluents bottle
- Anticoagulant tube
- Disposable capillary tube

Special Features :

- One-step testing procedure : Quick & Accurate
- High sensitivity and specificity
 - Sensitivity : FIV 96.8 %, FeLV 94.7 %
 - Specificity : FIV 99.6 %, FeLV 99.7 %



▪ **FIV Ab test**

A cat in the acute phase of infection may be antibody negative, and retesting within 6-8 weeks is warranted to establish a diagnosis in cats with a recent history that puts them at risk of exposure.

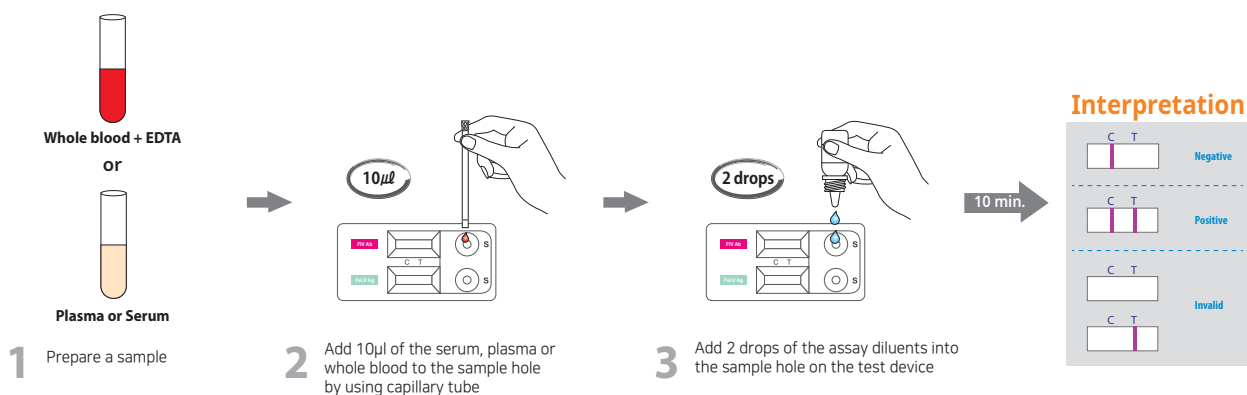
▪ **FeLV Ag test**

To completely eliminate any risk to an established household when bringing in a new cat. A follow-up test should be performed at least 90 days after the initial test or possible exposure to FeLV, because cats may be in the early stage of infection at the time of the first test.

▪ **Kitten**

FIV Ab tests have to be interpreted carefully in kittens less than 6 months of age. Kittens up to 12 weeks of age can have passively acquired anti-FIV antibody from mothers that are infected or have been vaccinated. If the kittens have a FIV positive result, the kitten should be retested after 8-12 weeks. If FIV negative, the kitten is unlikely to be infected, if still positive it is probably infected.

Test Procedure



Ordering Information

Cat. No.	Description	Type	Pack size
RC1204DD	FIV Ab/FeLV Ag	Dual Device	10 Tests/Kit

Anigen Rapid FPV Ag

General Information

Purpose : Detection of Feline Parvovirus antigen

Principle : Immunochromatographic assay

Specimen : Feline feces

Materials provided :

- Anigen Rapid FPV test device
- Assay diluents tube
- Disposable swab
- Disposable dropper

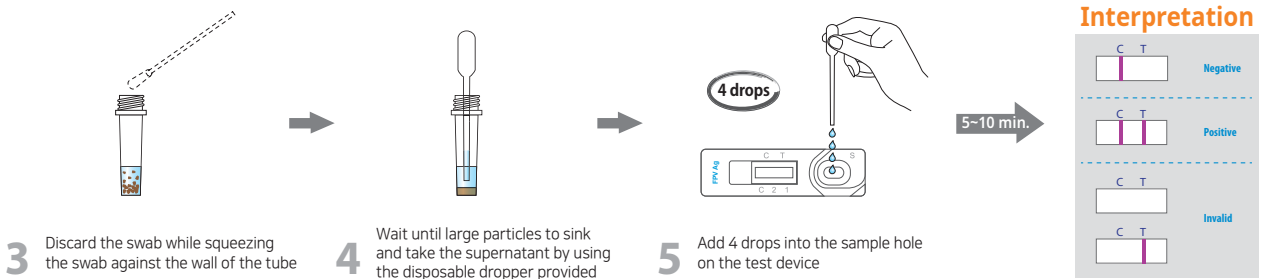
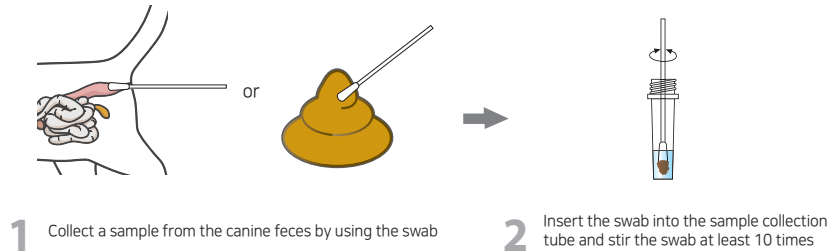
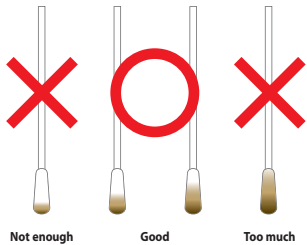
Special Features :

- One-step testing procedure : Quick & Accurate
- High sensitivity and specificity
 - Sensitivity : 97% vs. PCR
 - Specificity : 98.5% vs. PCR

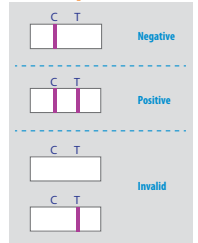


Test Procedure

[Proper sample amount collected by a swab]



Interpretation



Ordering Information

Cat. No.	Description	Type	Pack size
RG1203DD	FPV Ag	Device	10 Tests/Kit

FCoV Ag

General Information

Purpose : Detection of Feline Coronavirus antigen

Principle : Immunochromatographic assay

Specimen : Feline feces

Materials provided :

- Anigen Rapid FCoV test device
- Assay diluents tube
- Disposable swab
- Disposable dropper

Special Features :

- One-step testing procedure : Quick & Accurate
- High sensitivity and specificity
 - Sensitivity : 92.8 % vs. RT-PCR
 - Specificity : 98.1 % vs. RT-PCR

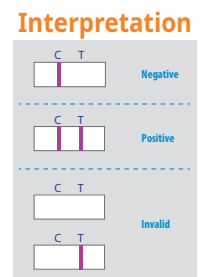
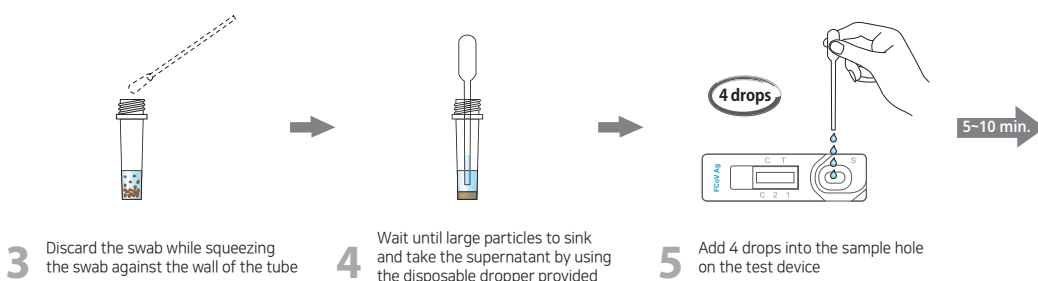
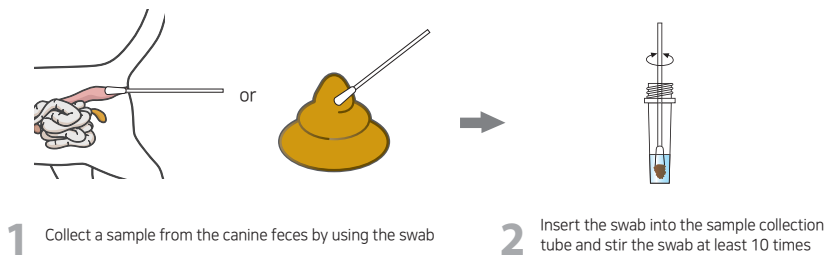
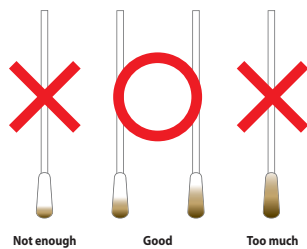


▪ **Feline infectious peritonitis ; FIP**

There are two basic forms of FIP-effusive (wet) and non effusive (dry) that have been characterized. Cats with effusive FIP usually only survive a few days-weeks at best. Cats with noneffusive FIP can survive for weeks or months, although after neurologic signs begin death usually occurs rapidly.

Test Procedure

[Proper sample amount collected by a swab]



Ordering Information

Cat. No.	Description	Type	Pack size
RG1205DD	FCoV Ag	Device	10 Tests/Kit

Anigen Rapid

FCoV Ab

General Information

Purpose : Detection of Feline Coronavirus antibody

Principle : Immunochromatographic assay

Specimen : Whole blood, plasma or serum

Materials provided :

- Anigen Rapid FCoV Ab test device
- Assay diluents bottle
- Anticoagulant tube
- Disposable capillary tube

Special Features :

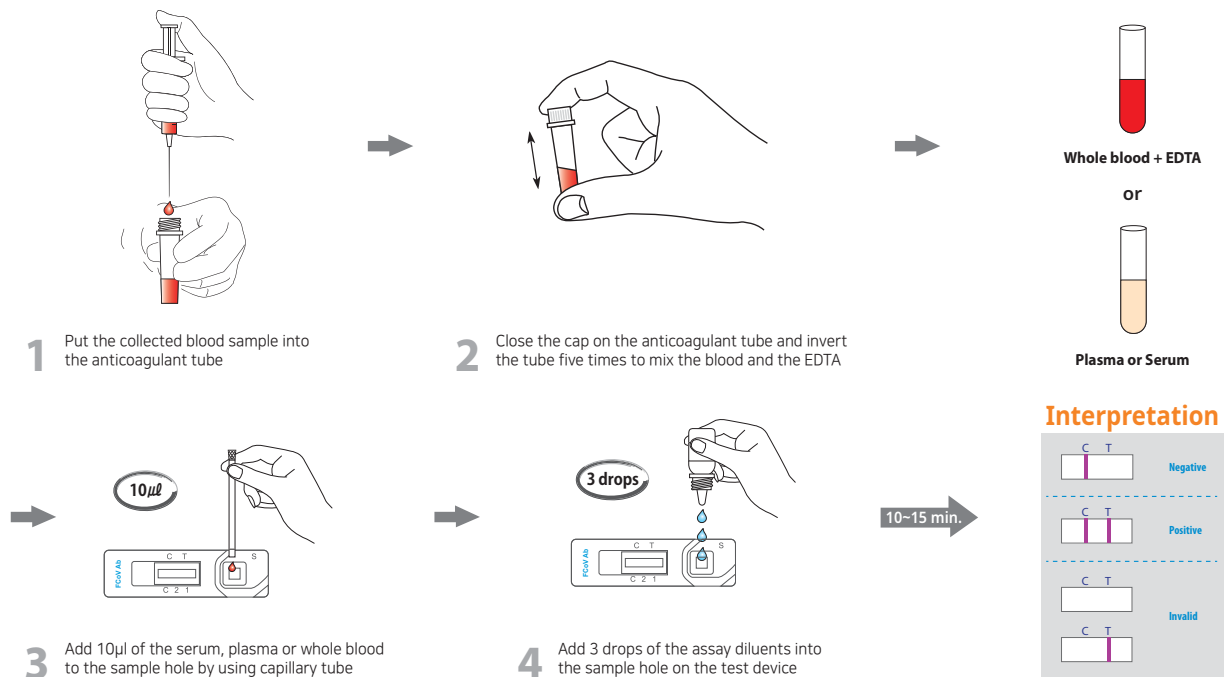
- One-step testing procedure : Quick & Accurate
- High sensitivity and specificity
 - Sensitivity : 96.0 % vs. IFA
 - Specificity : 97.9 % vs. IFA



▪ **How to do FIP diagnosis with Rapid FCoV Ab test**

- Many healthy cats and cats with conditions other than FIP are FCoV Ab positive.
- Some cats with effusive FIP appear to have low titers or are FCoV Ab negative.
- FCoV Ab testing should only be performed to determine FIP in conjunction with a compatible history, clinical signs, and examination of effusions or blood for high globulins and a low A:G ratio.

Test Procedure



Ordering Information

Cat. No.	Description	Type	Pack size
RB2203DD	FCoV Ab	Device	10 Tests/Kit

FCoV Ag/Ab

General Information

Purpose : Detection of Feline Coronavirus antigen / antibody

Principle : Immunochromatographic assay

Specimen : Ag - Feline feces
Ab - Whole blood, plasma or serum

Materials provided :

- Anigen Rapid FCov Ag/Ab test device
- Sample collection tube containing assay diluents
- Disposable swab
- Disposable dropper
- Assay diluent dropping bottle
- Anticoagulant tube
- Disposable capillary tube

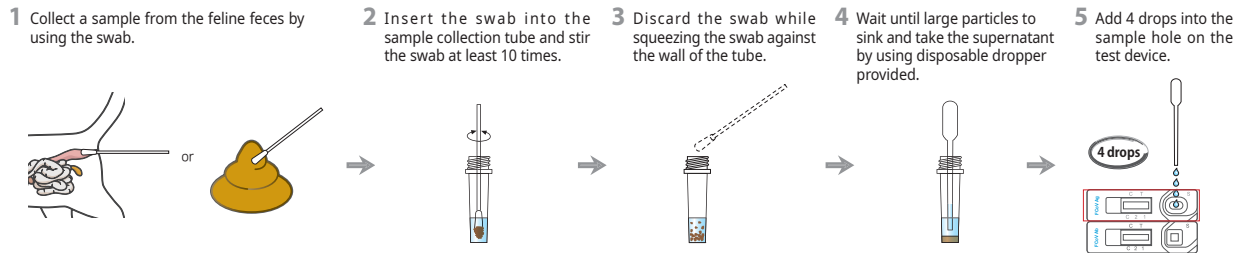


Special Features :

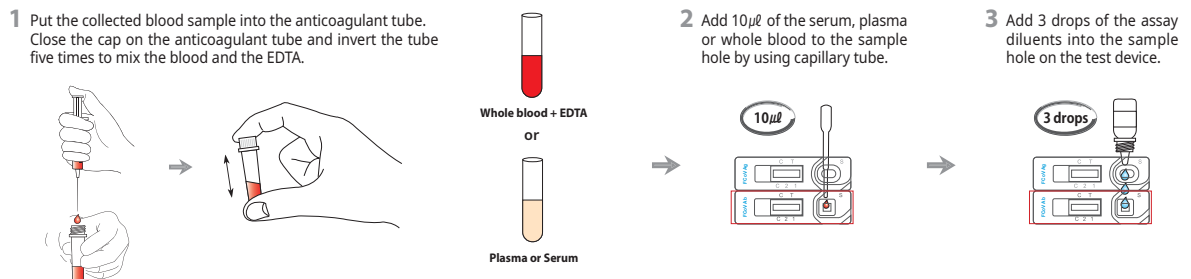
- One-step testing procedure : Quick & Accurate
- High sensitivity and specificity

Test Procedure

FCoV Ag Test



FCoV Ab Test



Ordering Information

Cat. No.	Description	Type	Pack size
RC1207CC	FCoV Ag/Ab	Dual Device	5 Tests/Kit

Anigen Rapid

FeliD-3 Ag

General Information

Purpose : Detection of Feline Parvovirus, Coronavirus and Giardia antigen

Principle : Immunochromatographic assay

Specimen : Feline feces

Materials provided :

- Anigen Rapid FPV/FCoV/Giardia test device
- Assay diluents tube for FPV/FCoV Ag (P)
- Assay diluents tube for Giardia Ag (G)
- Disposable swab
- Disposable dropper

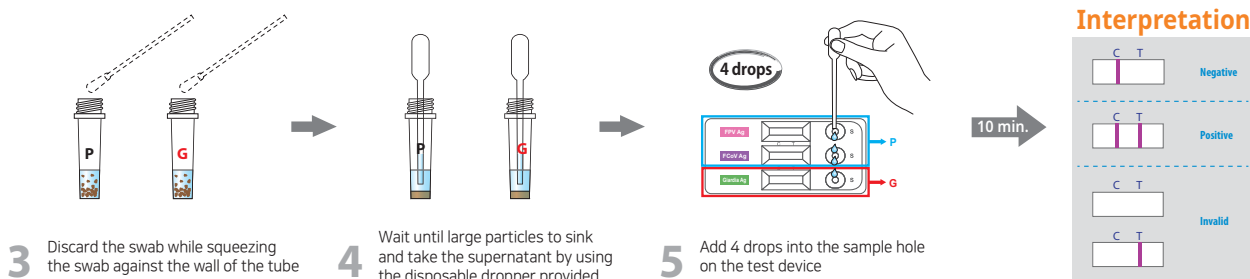
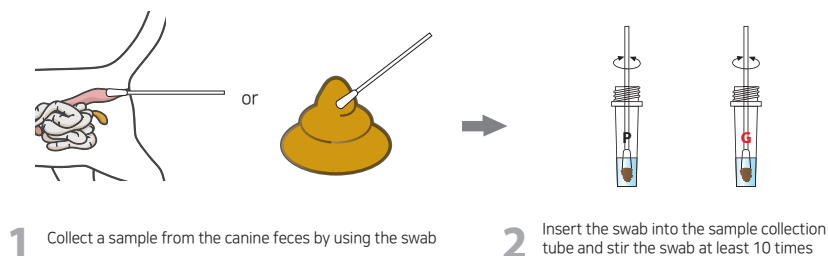
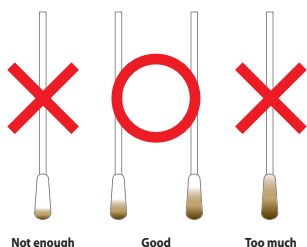
Special Features :

- Able to detect pathogens in cats
- One-step testing procedure : Quick & Accurate
- High sensitivity and specificity



Test Procedure

[Proper sample amount collected by a swab]



Ordering Information

Cat. No.	Description	Type	Pack size
RC1208DC	FeliD-3 Ag	Triple Device	5 Tests/Kit

FeliCheck-3

General Information

Purpose : Detection of Feline Immunodeficiency virus antibody, Feline Leukemia Virus antigen
Feline Heartworm antibody

Principle : Immunochromatographic assay

Specimen : Whole blood, plasma or serum

Materials provided :

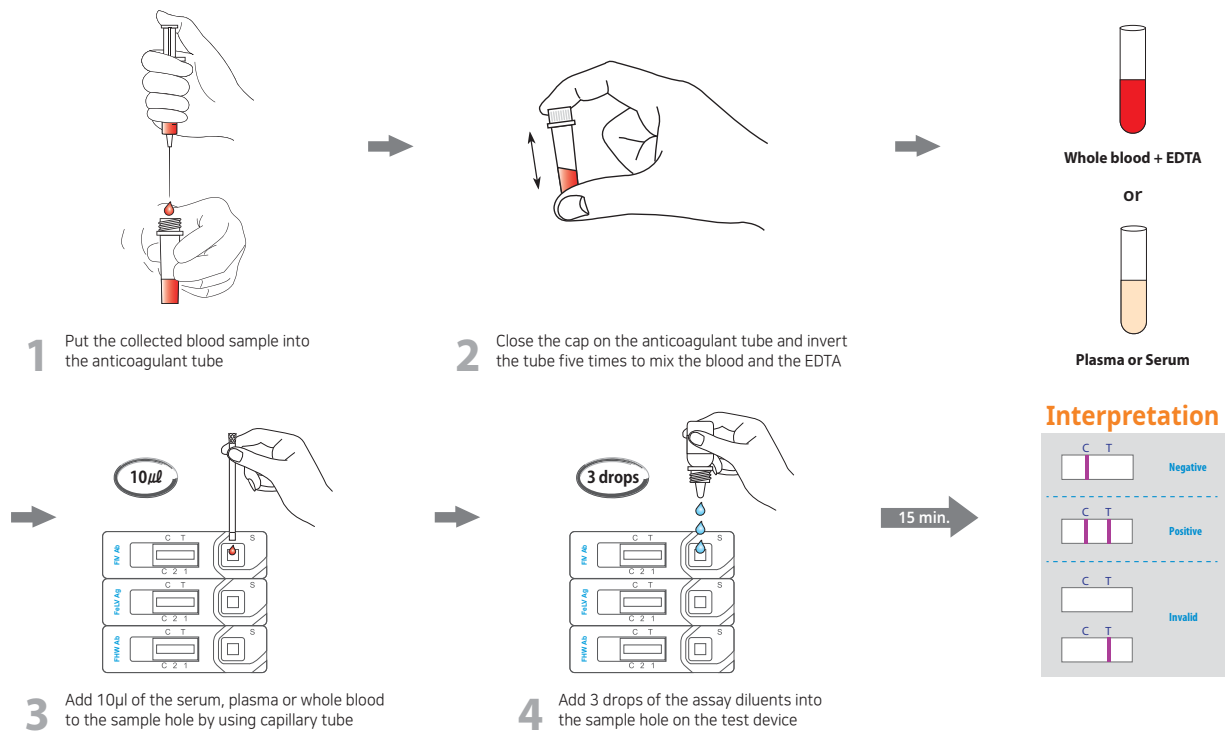
- Anigen Rapid FeliCheck-3 test device
- Assay diluents bottle
- Anticoagulant tube
- Disposable capillary tube

Special Features :

- One-step testing procedure : Quick & Accurate
- High sensitivity and specificity



Test Procedure



Ordering Information

Cat. No.	Description	Type	Pack size
RC2210CC	FeliCheck-3	Triple Device	5 Tests/Kit

Vcheck V200

General Information

Purpose : Providing rapid, accurate and reliable results for quantitative and semi-quantitative tests of various disease markers

Weight : 2.5 kg

Power source : AD/ DC adaptor (12V)

Screen : 7" color TFT, Touch Screen

Size : 200 * 240 * 205 (mm)

Printer : Built in printer

LIS/HIS Connectivity : HL7 v2.6 (PCD-01) POCT 1- A

Special Feature :
Auto hand-note recognition of patient's name



Currently Measurable Items

- **Acute Phase Protein**
Canine CRP, Feline SAA
- **Pancreatic-specific Lipase**
cPL, fPL
- **Hormone**
cCortisol, T4, cTSH, cProgesterone
- **Renal Biomarker**
SDMA
- **Marker for TE/DIC**
D-dimer
- **Infectious Disease**
CCV Ag, CDV Ag, CPV Ag, CPV/CCV Ag (3lines), CHW Ag, FPV Ag
- **Antibody Titer**
CDV Ab, CPV Ab, CAV Ab, FHV Ab, FPV Ab, FCV Ab

Items under Development








- NT-proBNP
- PCT

Ordering Information




Cat. No.	Description	Type	Pack size
VC7402EA	V200	Equipment	1 EA

Current available product list



Rapid

	Species	Product	Cat. No.	Type	Packing size	Description	Sample
PET Animal		Rapid CPV Ag Test Kit	RG1101DD	Device	1Test x 10/Kit	Detection of Canine Parvovirus antigen	Feces
		Rapid CHW Ag Test Kit 2.0	RG1102DD	Device	1Test x 10/Kit	Detection of Dirofilaria immitis antigen	Whole blood, plasma or serum
		Rapid CDV Ag Test Kit	RG1103DD	Device	1Test x 10/Kit	Detection of Canine Distemper virus antigen	Conjunctiva, urine, plasma or serum
		Rapid CCV Ag Test Kit	RG1104DD	Device	1Test x 10/Kit	Detection of Canine Coronavirus antigen	Feces
		Rapid CPV/CCV Ag Test Kit	RC1105DD	Device (Dual)	1Test x 10/Kit	Detection of Canine Parvovirus & Canine Coronavirus antigen	Feces
		Rapid CIV Ag Test Kit	RG1107DD	Device	1Test x 10/Kit	Detection of Canine Influenza virus antigen	Conjunctiva and nasal swab
		Rapid CDV/CAV Ag Test Kit	RC1108DD	Device (Dual)	1Test x 10/Kit	Detection of Canine Distemper virus & Canine Adenovirus antigen	Conjunctiva and nasal swab
		Rapid CIR3-3 Ag Test Kit	RC1109DD	Device (Dual)	1Test x 10/Kit	Detection of Canine Distemper virus, Canine Adenovirus & Canine Influenza virus antigen	Conjunctiva and nasal swab
		Rapid CDV/CIV Ag Test Kit	RC1110DD	Device (Dual)	1Test x 10/Kit	Detection of Canine Distemper virus & Canine Influenza virus antigen	Conjunctiva, urine, plasma or serum
		Rapid CPV/CCV/Giardia Ag Test Kit	RC1112DC	Device (Quadruple)	1Test x 5/Kit	Detection of Canine Parvovirus, Canine Coronavirus & Giardia lamblia antigen	Feces
		Rapid Rabies Ag Test Kit	RG1801DD	Device	1Test x 10/Kit	Detection of Rabies virus antigen	Brain homogenates
		Rapid Giardia Ag Test Kit	RG1804DD	Device	1Test x 10/Kit	Detection of Giardia lamblia antigen	Feces
		Rapid CPV Ab Test Kit 3.0	RB2153DD	Device	1Test x 10/Kit	Titration of Canine Parvovirus antibody	Whole blood, plasma or serum
		Rapid CDV Ab Test Kit 3.0	RB2154DD	Device	1Test x 10/Kit	Titration of Canine Distemper virus antibody	Whole blood, plasma or serum
		Rapid Canine Brucella Ab Test Kit	RB2103DD	Device	1Test x 10/Kit	Detection of Brucella canis antibody	Whole blood, plasma or serum
		Rapid Leishmania Ab Test Kit 2.0	RB2104DD	Device	1Test x 10/Kit	Detection of Leishmania infantum antibody	Whole blood, plasma or serum
		Rapid E.canis Ab Test Kit	RB2105DD	Device	1Test x 10/Kit	Detection of Ehrlichia canis antibody	Whole blood, plasma or serum
		Rapid Total IgE Test Kit	RB2110DD	Device	1Test x 10/Kit	Detection of Total IgE	Serum
		Rapid CaniV-4 Test Kit	RC2120DD	Device (Quadruple)	1Test x 10/Kit	Detection of Dirofilaria immitis antigen & Anaplasma, Borrelia, Ehrlichia antibody	Whole blood, plasma or serum
		Rapid Anaplasma Ab Test Kit	RB2121DD	Device	1 Test x 10/Kit	Detection of Anaplasma phagocytophilum/platys antibody	Whole blood, plasma or serum
		Rapid Lyme Ab Test Kit	RB2122DD	Device	1 Test x 10/Kit	Detection of Borrelia burgdorferi antibody	Whole blood, plasma or serum
Rapid E.canis Ab/Anaplasma Ab Test Kit	RC2123CD	Device (Dual)	1 Test x 10/Kit	Detection of Ehrlichia canis, Anaplasma phagocytophilum/platys antibody	Whole blood, plasma or serum		
Rapid Anaplasma Ab/Lyme Ab Test Kit	RC2124DD	Device (Dual)	1Test x 10/Kit	Detection of Anaplasma phagocytophilum/platys, Borrelia burgdorferi antibody	Whole blood, plasma or serum		
Rapid Canine Babesia Ab Test Kit	RB2126DD	Device	1Test x 10/Kit	Detection of Canine Babesia gibsoni antibody	Whole blood, plasma or serum		
Rapid CaniV-4 (Leish) Test Kit	RC2127DD	Device (Quadruple)	1Test x 10/Kit	Detection of Dirofilaria immitis antigen & Anaplasma, Leishmania, Ehrlichia antibody	Whole blood, plasma or serum		
		Rapid FeLV Ag Test Kit	RG1201DD	Device	1Test x 10/Kit	Detection of Feline Leukemia virus antigen	Whole blood, plasma or serum
		Rapid FPV Ag Test Kit	RG1203DD	Device	1Test x 10/Kit	Detection of Feline Panleukopenia virus antigen	Feces
		Rapid FIV Ab/FeLV Ag Test Kit	RC1204DD	Device (Dual)	1Test x 10/Kit	Detection of Feline Leukemia virus & Feline Immunodeficiency virus antibody	Whole blood, plasma or serum
		Rapid FCoV Ag Test Kit	RG1205DD	Device	1Test x 10/Kit	Detection of Feline Coronavirus antigen	Whole blood, plasma or serum
		Rapid FCoV Ag/Ab Test Kit	RC1207CC	Device (Combo)	1Test x 5/Kit	Detection of Feline Coronavirus antigen & antibody	Feces, Whole blood, plasma or serum
		Rapid FeliD-3 Test Kit	RC1208DC	Device (Quadruple)	1Test x 5/Kit	Detection of Feline Parvovirus, Canine Coronavirus & Giardia lamblia antigen	Feces
		Rapid FIV Ab Test Kit	RB2201DD	Device	1Test x 10/Kit	Detection of Feline Immunodeficiency Virus antibody	Feces
		Rapid FCoV Ab Test Kit	RB2203DD	Device	1Test x 10/Kit	Detection of Feline Coronavirus antibody	Whole blood, plasma or serum
		Rapid FHW Ag/Ab Test Kit	RC2205CD	Device (Combo)	1Test x 10/Kit	Detection of Feline Heratworm antigen & antibody	Whole blood, plasma or serum
		Rapid Toxoplasma Ab Test Kit	RB2206DD	Device	1Test x 10/Kit	Detection of Toxoplasma gondii antibody	Whole blood, plasma or serum
		Rapid FeliCheck-3 Test Kit	RC2210CC	Device(3 Combo)	1Test x 5/Kit	Detection of Feline Leukemia Virus, Feline Immunodeficiency Virus & Dirofilaria immitis antibody	Whole blood, plasma or serum
Livestock Animal		Rapid Bovine D-4 Ag Test Kit	RC1301DD	Device (Quintuple)	1Test x 10/Kit	Detection of Bovine Rotavirus, Coronavirus and E.coli K99, Cryptosporidium antigen	Feces
		Rapid Bovine D-5 Ag Test Kit	RC1302DD	Device (Quintuple)	1Test x 10/Kit	Detection of Bovine Rotavirus, Coronavirus and E.coli K99, Cryptosporidium, Giardia antigen	Feces
		Rapid Rota Ag Test Kit	RG1803DD	Device	1Test x 10/Kit	Detection of Rotavirus antigen	Feces
		Rapid D4 Diarrhea Ag Test Kit	RG1806DD	Device (Quintuple)	1Test x 10/Kit	Detection of Bovine Rotavirus, E.coli K99, Cryptosporidium and Giardia antigen	Feces
		Rapid B.Brucella Ab Test Kit	RB2301DD	Device	1Test x 10/Kit	Detection of Brucella abortus antibody in cattle	Whole blood, plasma or serum
		Rapid Bovine TB Ab Test Kit	RB2302DD	Device	1Test x 10/Kit	Detection of Mycobacterium bovis antibody	Whole blood, plasma or serum
		Rapid FMD NSP Ab Test Kit	RB2802DD	Device	1Test x 10/Kit	Detection of Foot and Mouth Disease Virus antibody field infected	Whole blood, plasma or serum
			Rapid GS.Brucella Ab Test Kit	RB2306DD	Device	1Test x 10/Kit	Detection of Brucella antibody in sheep and goat
	Rapid Toxoplasma Ab Test Kit (For farm animals)		RB2805DD	Device	1 Test x 10/Kit	Detection of Toxoplasma gondii antibody	Whole blood, plasma or serum
		Rapid MERS-CoV Ag Test Kit	RG1805SG	Strip	1Test x 25/Kit	Detection of Middle East Respiratory Syndrome Coronavirus antigen	Nasal swab
Rapid Camel Brucella Ab Test Kit		RB2309SG	Strip	1Test x 25/Kit	Detection of Brucella antibody in camel	Whole blood, plasma, serum or raw milk	
	Rapid PED Ag Test Kit	RG1401DD	Device	1Test x 10/Kit	Detection of Porcine Epidemic Diarrhea virus antigen	Feces	
	Rapid TGE/PED Ag Test Kit	RC1403DD	Device (Dual)	1Test x 10/Kit	Detection of TGE and PED virus antigen	Feces	
	Rapid PED/TGE/Rota Ag Test Kit	RC1406DD	Device (Quintuple)	1Test x 10/Kit	Detection of PED, TGE and Rotavirus antigen	Feces	
	Rapid Rota Ag Test Kit	RG1803DD	Device	1Test x 10/Kit	Detection of Rotavirus antigen	Feces	
	Rapid FMD NSP Ab Test Kit	RB2802DD	Device	1Test x 10/Kit	Detection of Foot and Mouth Disease virus antibody field infected	Whole blood, plasma or serum	
	Rapid AIV Ag Test Kit	RG1501MH	Multi device	10Test x 3/Kit	Detection of Avian Influenza type A virus antigen	Feces or Trachea swab	
	Rapid H5 AIV Ag Test Kit	RG1505MH	Multi device	10Test x 3/Kit	Detection of Avian Influenza type A virus and subtype H5 antigen	Feces or Trachea swab	
	Rapid NDV Ag Test Kit	RG1503DD	Device	1Test x 10/Kit	Detection of Newcastle Disease virus antigen	Feces or Trachea swab	
	Rapid IBDV Ag Test Kit	RG1504DD	Device	1Test x 10/Kit	Detection of Infectious Bursal Disease virus antigen	Bursa of Fabricious, Feces	
	Rapid IBV Ag Test Kit	RG1513DD	Device	1Test x 10/Kit	Detection of Infectious Bronchitis virus antigen	Feces or Trachea swab	

ELISA

	Species	Product	Cat. No.	Type	Packing size	Description	Sample
		B.Brucella Ab ELISA 2.0	EB4301PO	Microplate	480 Wells/Kit	Detection of Brucella abortus antibody	Serum, plasma, raw milk
		Brucella Ab C- ELISA	EB4305PO	Microplate	480 Wells/Kit	Detection of Brucellosis antibody C-ELISA	Serum, plasma
		BTB Ab ELISA 2.0	EB4304PO	Microplate	480 Wells/Kit	Detection of Mycobacterium bovis antibody	Serum, plasma
		FMD NSP Ab ELISA	EB4801PO	Microplate	480 Wells/Kit	Detection of Foot and Mouth Disease Virus antibody field infected	Serum, plasma
		FMD O type Ab ELISA	EB4803PO	Microplate	480 Wells/Kit	Detection of Foot and mouth disease (FMD) SP Antibody	Serum, plasma
		TB-Feron ELISA Plus	EG3802PO	Microplate	150 Tests/Kit	Detection of Gamma-interferon in bovine tuberculosis	Plasma
		CSFV Ab ELISA	EB4413PO	Microplate	480 Wells/Kit	Detection of Classical Swine Fever Virus antibody	Serum, plasma
		PRRS Ab ELISA 4.0	EB4404PO	Microplate	480 Wells/Kit	Detection of Porcine Reproductive and Respiratory Syndrome Virus antibody	Serum, plasma
		PED IgA Ab ELISA	EB4410PO	Microplate	480 Wells/Kit	Detection of IgA for Porcine Epidemic Diarrhea Virus	Colostrum
		AIV Ab ELISA	EB4502PO	Microplate	480 Wells/Kit	Detection of AIV type A antibody	Serum

Vcheck

	Species	Product	Cat. No.	Type	Packing size	Description	Sample
PET Animal		Vcheck SDMA	VCF125DD	Device	1Test x 10/Kit	Quantitative measurement of Symmetric dimethylarginine (SDMA)	Serum, Plasma
		Vcheck D-dimer	VCF107DD	Device	1 Test x 10/Kit	Quantitative measurement of canine D-dimer	Plasma
		Vcheck T4	VCF106DD	Device	1Test x 10/Kit	Quantitative measurement of T4 (thyroxine)	Serum
		Vcheck cTSH	VCF118DC	Device	1Test x 5/Kit	Quantitative measurement of canine TSH	Serum
		Vcheck cProgesterone	VCF122DD	Device	1Test x 10/Kit	Quantitative measurement of canine Progesterone	Serum
		Vcheck cCRP 2.0	VCF109DD	Device	1Test x 10/Kit	Quantitative measurement of C-reactive protein(CRP)	Serum, Plasma
		Vcheck cPL	VCF103DD	Device	1Test x 10/Kit	Quantitative measurement of Canine pancreas-specific lipase	Serum
		Vcheck cCortisol	VCF105DD	Device	1Test x 10/Kit	Quantitative measurement of Canine cortisol	Serum
		Vcheck CCV Ag	VCF110DD	Device	1Test x 10/Kit	Detection of Canine Coronavirus antigen	Feces
		Vcheck CDV Ag	VCF111DD	Device	1Test x 10/Kit	Detection of Canine Distemper virus antigen	Conjunctiva, urine, plasma or serum
		Vcheck CPV Ag	VCF112DD	Device	1Test x 10/Kit	Detection of Canine Parvovirus antigen	Feces
		Vcheck CPV/CCV Ag (3 lines)	VCF114DD	Device	1Test x 10/Kit	Detection of Canine Parvovirus & Canine Coronavirus antigen	Feces
		Vcheck CHW Ag	VCF117DD	Device	1Test x 10/Kit	Detection of Canine Heartworm antigen	Whole blood, plasma or serum
		Vcheck CDV Ab	VCF115DD	Device	1Test x 10/Kit	Titration of Canine Distemper virus antibody	Serum, Plasma
		Vcheck CPV Ab	VCF116DD	Device	1Test x 10/Kit	Titration of Canine Parvovirus antibody	Serum, Plasma
Vcheck CAV Ab	VCF126DD	Device	1 Test x 10/Kit	Titration of Canine Adenovirus antibody	Serum, Plasma		
	Vcheck SDMA	VCF125DD	Device	1 Test x 10/Kit	Quantitative measurement of Symmetric dimethylarginine (SDMA)	Serum, Plasma	
	Vcheck fSAA	VCF102DD	Device	1Test x 10/Kit	Quantitative measurement of Serum Amyloid A (SAA)	Serum, Plasma	
	Vcheck fPL 2.0	VCF127DD	Device	1Test x 10/Kit	Quantitative measurement of Feline pancreas-specific lipase	Whole blood, plasma or serum	
	Vcheck T4	VCF106DD	Device	1Test x 10/Kit	Quantitative measurement of T4 (thyroxine)	Serum	
	Vcheck FPV Ag	VCF113DD	Device	1Test x 10/Kit	Detection of Feline Panleukopenia virus antigen	Feces	
	Vcheck FHV Ab	VCF119DD	Device	1Test x 10/Kit	Titration of Feline Herpesvirus antibody	Serum, Plasma	
	Vcheck FPV Ab	VCF120DD	Device	1Test x 10/Kit	Titration of Feline Panleukopenia virus antibody	Serum, Plasma	
	Vcheck FCV Ab	VCF121DD	Device	1Test x 10/Kit	Titration of Feline Calicivirus antibody	Serum, Plasma	

